

Gee Vee Travel

Coach Holidays

2022



Main Image: © VisitEngland - Weymouth and Portland Borough Council - John Snelling



www.geeveetravel.co.uk

All our Holidays are Fully Bonded
and operate a No Smoking Policy



Welcome to Gee Vee Travel 2022 Coach Holidays

38 years of touring with you



Dear Friends...

We have reached our 38th year of touring. Despite a testing time throughout the past 2 years, and also sadly losing a member of the Gee Vee family, to whom many of you knew him as Alan Barlow (Kerry's Husband), we can all hope that everyone associated with Gee Vee and beyond, we wish for a better/healthier/prosperous 2022.



We have been continuing, with our regimes and policies in response to Covid-19. Our priority is safety and relaxation whilst on our holidays, with concerns for staff and customers at the forefront of our minds, we feel confident that we can provide true quality for everyone on all our tours. Looking forward to this new year, we can't wait to visit our favourite destinations and, adding in some more new and exciting places and even revisiting some old areas.

Gordon, Val, family and Staff thank you for your much valued support in 2021, and hope to see you all soon !!!

It's so Easy to Book...

- 1 Call our friendly Reservation Team**
Our highly experienced staff are looking forward to taking your call. Our reservations team will be happy to answer any questions you may have, and take care of all the booking arrangements for you over the phone, where we accept Debit/Credit Card payments.
- 2 By Post**
Simply send your deposit and insurance (if required) to any of our offices making cheques payable to "Gee Vee Travel".
- 3 Call in Person**
Just call into any of our offices at Barnsley, Chesterfield or Sheffield. We are always pleased to meet our clients personally and to discuss your holiday requirements first hand.





Barnsley Office

36-38 Eldon Street, Barnsley S70 2JB

Tel 01226 287403

Ask for Jayne, Bev & Joanne



Chesterfield Office

37 St Mary's Gate, Chesterfield S41 7TH

Tel 01246 555002

Ask for Kerry or Joanne



Sheffield Office

23 Holme Lane, Hillsborough, Sheffield S6 4JP

Tel 0114 232 3366

Ask for Jane



Booking Guide

GUIDE TO BOOKING YOUR HOLIDAY

PLEASE READ CAREFULLY

WHAT WE NEED TO KNOW

When you book your holiday, we need to know, your name(s), full address and telephone number. Should you have any special requests (such as low floor rooms, sea view, adjoining rooms) you MUST advise us at the time of booking. We will then pass on your special request to the hotels concerned. We generally receive many requests however, and under no circumstances can we guarantee that they will be met or that the hotel(s) is/are able to provide the requested facility. We cannot, therefore, accept a booking which is made conditional upon a special request being satisfied. We aim to provide you with the best holiday possible, but in the unlikely event that a problem should arise, you must bring this to the attention of your drivers/hotel manager, so that we can resolve the matter on the spot.

WHEELCHAIRS/WALKERS

Limited to 4 per tour. These must be flat folding due to space limitations. Please notify our staff at the time of booking if you are taking a wheelchair/walker, no motorised scooters or battery powered wheelchairs allowed.

YOUR PICK UP POINT

We offer a door-to-door pick up service on all tours (Subject to areas*) over 4 days in duration unless otherwise stated. However to reduce costs and time for stays of just 2 or 3 days we have to introduce a pick up route as follows:

BARNSELY BUS STATION, SHEFFIELD INTERCHANGE (POND ST) AND CHESTERFIELD COACH STATION. For the comfort of all passengers these points must be adhered to and your pick up point must remain the same as your return point.

*Areas included are BARNSELY, CHESTERFIELD AND THE DEARNE AREA.

Any customers from the Sheffield area will receive a £5.00 discount to get to either CHAPELTOWN, HERRIES ROAD, SHEFFIELD INTERCHANGE (POND ST) or CHESTERFIELD COACH STATION.

Any alterations to your address or pick up point must be notified to one of our offices no later than 8 DAYS prior to departure.

TERMS OF BOOKING

WE ACCEPT CASH, CHEQUE OR VISA CARD PAYMENTS A NON REFUNDABLE DEPOSIT OF £30 + INSURANCE (IF REQUIRED) MUST BE PAID WITHIN 7 DAYS OF BOOKING.

If you have your own insurance or wish to travel without you will be asked to complete an insurance disclaimer form.

Your balance must be paid 6 weeks prior to departure. 8 weeks prior to departure for Jersey.

HOTEL FACILITIES

All information regarding hotel facilities are taken from each individual hotel's brochure. For information or enquiries regarding lifts/stairs, etc please consult the hotel brochure or contact the hotel concerned. Some of the hotels will have imposed by law the non smoking policy. Each hotel will have designated smoking areas and will advise visitors on arrival.

INFECTION CONTROL POLICY

The company must be notified if any customer has suffered from either vomiting and/or diarrhoea within 72 hours of travelling. Please note that some hotels may refuse any persons who they consider to be a risk to other passengers or staff due to being taken ill during transit. (This strict policy helps to protect you, staff and other travelling guests).

DISCLAIMER FOR ALL INCLUSIVE WITH FREE BAR IN SCOTLAND

'Under the terms of the licensing (Scotland) at 2005, the supply of alcoholic drinks in our All Inclusive Packages is not unlimited. Subject to our discretion in the case of drunkenness, patrons on an All Inclusive Package shall be permitted a maximum of £15 worth of alcoholic drinks per day as part of the package.'



CANCELLATION/TRANSFERS

In the event of you having to cancel your holiday please take note of our cancellation charges below. These charges apply to all holidays whether you take insurance or not. To avoid any unpleasantness we advise you to read your insurance very carefully on receipt as refunds of premiums cannot be issued unless it is within 14 days of purchase. A transfer fee of £10 per person will be charged for any changes made EARLIER than 6 weeks prior to departure.

Transfers not allowed under 6 weeks.

LUGGAGE

As the majority of our pick ups are done by taxis we would like to stress that luggage must be restricted to one medium suitcase per person (max 15kgs in weight) or one large suitcase per couple plus one item of hand luggage. Your "GEE VEE TRAVEL" luggage labels will be issued when you pay your balance and these must be clearly marked with your name, address/pick up point and holiday destination.

The company reserves the right to cancel any one tour due to public demand or change any hotels or itineraries due to unforeseen circumstances.



INCLUDED EXCURSIONS

5 day tour = 1 full day and a half day excursion.

6/7 day tour = 2 full day excursions.

8 days and above tours = 2 full days and a half day excursion.

Unless otherwise stated. Venues for excursions will be at the drivers discretion.

DUTY FREE

Although government guidelines have changed regarding limits on duty free, due to space limitations these guidelines may not be accepted.

CANCELLATION CHARGES

Prior to 42 days before departure.....	Deposit only
29 to 42 days before departure.....	30% of holiday cost
15 to 28 days before departure date.....	45% of holiday cost
8 to 14 days before departure date	60% of holiday cost
1 to 7 days before departure date.....	100% of holiday cost

VAT is included at 20% any amendment of this tax could result in a price variation.

FUEL SUPPLEMENTS/CHARGES

As all prices were calculated in July 2021, unfortunately if the price of fuel keeps increasing, we may and have the authority to add a small charge on to every holiday.

Gift Vouchers



**NO IDEA OF WHAT TO GET
SOMEONE FOR CHRISTMAS OR
THEIR BIRTHDAY OR EVEN JUST TO SAY THANK YOU?**

Do they like holidays?

Then ponder no more... Gift Vouchers are available from Gee Vee Travel, in various denominations and are redeemable against their holidays and tours. Call into any of our offices for further details.

Travel Insurance

HOLIDAY INSURANCE Wrightsure Client Holiday Travel Insurance is available for all eligible passengers travelling on our holidays which is arranged by Wrightsure Services (Hampshire) Limited, underwritten by AWP P&C SA and is administered in the UK by Allianz Assistance. Allianz Assistance is a trading name of AWP Assistance UK Ltd. AWP Assistance UK Limited is registered in England (registration number 1710361). Registered office PO Box 74005, 60 Gracechurch Street, London, EC3P 3DS. AWP Assistance UK Limited are authorised and regulated by the Financial Conduct Authority (FCA). AWP P&C SA is authorised and regulated by L'Autorité de Contrôle Prudentiel et de Résolution in France. Deemed authorised by the Prudential Regulation Authority (PRA). Subject to regulation by the FCA and limited regulation by the PRA. Details of the Temporary Permissions Regime, which allows EEA-based firms to operate in the UK for a limited period while seeking full authorisation, are available on the FCA's website. Wrightsure Services (Hampshire) Ltd is authorised and regulated by the Financial Conduct Authority (their registration number is 311394) and is permitted to advise on and arrange general insurance contracts. You can check these details online using the Financial Services Register (accessible from <https://register.fca.org.uk>) or by contacting the Financial Conduct Authority Consumer Helpline on 0800 1116768. Should you wish to take out this travel insurance please include the appropriate premium when booking your holiday.

DEMANDS AND NEEDS This insurance policy will suit the demands and needs of an individual or group (where applicable) who have no excluded medical condition(s), are travelling in countries included within the policy terms and who wish to insure themselves against unforeseen circumstances/events detailed in the cover section below. Subject to the terms, conditions and maximum specified sums insured.

IMPORTANT We will not provide you with advice about the suitability of this product for your individual needs but will be happy to provide you with factual information. We summarise below the details of the insurance cover provided which also includes 24-hour emergency service from Allianz Assistance. The following is a brief summary of the cover available. Full details of cover and exclusions will be forwarded with your confirmation of booking. In any event you may ask for a specimen copy of the policy wording before booking should you wish to examine this in advance.

HEALTH DECLARATION & EXCLUSIONS If you are only travelling within the UK, Channel Islands or Isle of Man during your journey, it is a condition of this policy that you can comply with the following: -

- 1) You are fit to travel and undertake your planned journey.
- 2) Following any claim investigation, your doctor confirms they would have agreed with or recommended your travel plans when you took out this insurance, booked your journey or at the time you travelled (whichever is later).
- 3) You are not travelling with the purpose of having medical treatment or a consultation.
- 4) You are not awaiting the outcome of any medical tests or an appointment at a medical facility for any medical investigations.

For travel outside of the UK

You will not be covered for any claims arising as a direct or indirect result of an existing medical condition if, in the 12 months before taking out this insurance or booking your journey (whichever is later), if you: -

- 1) Were referred for tests, investigations, treatment or surgery, or were awaiting the results of any referral.
- 2) Attended or were due to attend a hospital or clinic as an outpatient or inpatient received treatment or saw a medical practitioner for a medical condition.
- 3) Were prescribed medication.

Unless the condition(s) has (have) been declared to and accepted by us in writing. You should contact the Medical Screening Team by calling 023 9241 9063 if

- You need to declare a medical condition;
- You are unsure whether a medical condition needs to be declared or not.

If we are unable to cover a medical condition, this will mean that any other person insured by us will not be able to make a claim arising from the medical condition(s). This may even apply if the person with the medical condition(s) purchases cover from another provider.

Exclusions relating to the health of someone not insured on this policy, but whose health may affect your decision whether to take or continue with your journey

You will not be covered for any directly or indirectly related claims (see note at the end of this section) arising from the health of a travelling companion, someone you were going to stay with, a close relative or a business associate if at the time your policy was issued: -

- You were aware they had undiagnosed medical condition(s) for which they were awaiting tests, investigations or the results of these.
- You were aware that their medical condition(s) were unstable, were likely to get worse in the next 12 months or they had been diagnosed as having a terminal condition.

If our chosen insurance provider, Wrightsure Services (Hampshire) Limited are unable to offer you the travel insurance cover you require, or your premium is higher than you expected because you have serious medical conditions, you may be able to get help by accessing the Money and Pensions Service travel directory or by calling 0800 138 7777 (lines are open Monday to Friday, 8am to 6pm).

SIGNIFICANT EXCLUSIONS

RESIDENCY If you or anyone else named on this policy has not been a resident in the UK for more than 12 months, or if studying or working in the UK for more than 6 months, before the policy was issued, this policy cannot cover you. In addition to the above the policy also contains the following main exclusions: -

- Any existing medical conditions unless they have been declared to (where appropriate) and accepted by the insurer.
- Your participation in any organised sports or dangerous activities unless they have been declared to and accepted by the Insurer.
- Suicide, self-injury or deliberately putting yourself at risk (unless you are trying to save another person's life).
- Travel against the advice of the carrier, any other public transport provider, the Foreign Office or the World Health Organisation.
- Any manual work or hazardous occupation undertaken during the insured trip.
- The bankruptcy/liquidation of the tour operator, travel agent or transportation company with whom you have booked your trip.
- An epidemic or pandemic, except as expressly covered under section 1 (Cancellation) & Section 5 (Medical & other Expenses).

Examples of these and other conditions and restrictions and what to do if you are unsure about any aspect of an exclusion are contained within your policy information. Full details are contained within your policy information.

How to make a claim

All claims should be made direct to Allianz Assistance. Please visit the website www.azgatravelclaims.com. This will lead you to insurers online claims notification service where claim forms can be obtained immediately via email or by downloading directly from the site. Alternatively, please phone and ask for a claim form or write to: Allianz Assistance Travel Insurance Claims Department, PO Box 451, Feltham TW13 9EE, telephone 0208 603 9958 or email travel.claims@allianz-assistance.co.uk

Protecting your information

We will only use your personal details in line with our Privacy Notice. This can be found on our website or is available in hard copy format upon request and you should read this carefully and contact us immediately if you have any queries. Your personal information includes all of the details you have given us to process your insurance policy (we will not ask for more information than is necessary). We may share your data with Third Parties for the provision and ongoing performance of your insurance policy. Your data may be transferred outside the UK. All of the personal information you supply to us will be handled strictly in accordance with the applicable Data Protection regulations and legislation.

Mr G Clark, Mrs V Clark, Mr S Clark & Mrs K Barlow trading as Gee Vee Travel are an Appointed Representative of Wrightsure Services (Hampshire) Limited who are authorised and regulated by the FCA (their registration number is 311394) and which is permitted to advise on and arrange general insurance contracts. You can check these details online using the Financial Services Register (accessible from www.fca.org.uk) or be contacting the Financial Conduct Authority Consumer Helpline on 0800 111 6768.

If our chosen insurance provider, Wrightsure Services (Hampshire) Limited are unable to offer you the travel insurance cover you require, or your premium is higher than you expected because you have serious medical conditions, you may be able to get help by accessing the Money and Pensions Service travel directory or by calling 0800 138 7777 (lines are open Monday to Friday, 8am to 6pm).

TRAVEL INSURANCE PREMIUMS (per person)		
No of Days	UK	EUROPE
Up to 3 days	£19.00	£36.00
Up to 5 days	£25.00	£41.00
Up to 10 days	£27.00	£46.00

These premiums include 'insurance premium tax'. These are per person.

United Kingdom: includes England, Scotland, Wales, Northern Ireland and the Isles of Scilly.

Europe: Includes Republic of Ireland, Channel Islands, Isle of Man, Commonwealth of Independent States (west of the Ural Mountains), islands in the Mediterranean, Morocco, Algeria, Tunisia, Turkey, the Canary Islands, Madeira, Azores and Iceland.

Worldwide: Means all other countries.

Premiums shown are inclusive of Insurance premium Tax at the appropriate rate. As cover under the cancellation section commences immediately once the holiday booking has been accepted, no refund in premium can be allowed (other than 14 day refund).

Gee Vee Travel is a company committed to customer satisfaction and consumer financial protection. We are therefore pleased to announce that, at no extra cost to you, and in accordance with "The Package Travel, Package Tours Regulations 1992" all passengers booking with Gee Vee Travel are fully insured for the initial deposit, and subsequently the balance of monies paid as detailed in your booking confirmation form. The policy will also include repatriation if required, arising from the cancellation or curtailment of your travel arrangements due to the insolvency of Gee Vee Travel. This insurance has been arranged by Wrightsure Services (Hampshire) Limited.

In the unlikely event of insolvency, you must inform Claims Settlement Agencies immediately on +44(0) 1702 427 239 or at submitclaim.co.uk/TDC15. You can also write to them by email info@csal.co.uk or by post at 308-314 London Road, Hadleigh, Benfleet, Essex SS7 2DD. Please ensure you retain the booking confirmation form as evidence of cover and value.

Policy exclusions: This policy will not cover any monies paid for Travel Insurance or any claim relating to Air Flights.

Please ensure the Company you have booked with have appropriate CAA/ATOL Bonds in place.

THIS WORDING CAN ONLY BE USED UPON ACCEPTANCE OF OUR QUOTATION TERMS.

SUMMARY OF COVER PLEASE SEE THE POLICY WORDING FOR FULL DETAILS OF THE COVER, LIMITATIONS AND EXCESSES, A SPECIMEN COPY OF WHICH IS AVAILABLE UPON REQUEST.

SECTION OF COVER	MAXIMUM SUMS INSURED AND / OR BENEFITS PER PERSON	MAXIMUM EXCESS PER PERSON
Cancellation	Up to £1,500	£60*
Travel Delay	Travel Delay up to £60 Cancellation (holiday abandonment) up to £1,500	Travel Delay Excess = 12 hours £60**
Missed Departure	Up to £100 in England, Scotland, & Wales/£300 for Northern Ireland, Isles of Scilly, Channel Islands & Europe	Nil
Personal Accident- Medical & Other Expenses (including Curtailment & Repatriation.	Up to £10,000 Death and corresponding Benefits limited to £5,000 in respect of persons aged 66 and over at time of travel Up to £1,000,000 outside of the UK. Dental treatment limited to £350, additional travel accommodation and repatriation expenses if you are hospitalised or have to stay in beyond your return date. Trips solely within the UK are limited to £1,500 and to £300 for additional travelling expenses.	Nil £60***
Funeral Expenses Abroad Taxi Fares & Telephone Calls	£1,000 £100	
Medical Confinement Benefit	£10 per 24 hours up to £100 UK £15 per 24 hours up to £450 Channel Islands & Europe	Nil
Curtailment	Up to £1,500	
Personal Property Including Money	Up to £1,500 in all. Single Article Limit £200/Valuables £200 Personal Money Up to £200 Delayed Baggage (after 12 hours) - Up to £100	£60 £60 Nil
Loss of Passport	Up to £200 including loss or theft of visa	Nil
Missed Departure	Up to £100 UK & £300 Europe	
Personal Liability	Up to £1,000,000	Nil
Legal Expenses	Up to £25,000	Nil

* Excess only applies for cancellation of a journey over three days in duration (Nil for Loss of Deposit).

*** Nil excess for curtailment of a journey up-to and including 3 days duration

** Excess only applies for abandonment of a journey over 3 days duration.



Memby Hall Hotel

Perfectly situated in a perfect destination! The Memby Hall Hotel is on the seafront of Falmouth. It is a family run hotel with a friendly, relaxing atmosphere. All bedrooms have en-suite facilities and most have sea views.



We offer wireless broadband connections to our guests too. We also include tea/coffee making facilities, colour television, telephones and hairdryers with a lift to all floors. There is also a sauna/spa within the hotel with a jacuzzi, however, there must be 30 mins advanced booking for the sauna.

PRICE INCLUDES

- ✓ All coach travel
- ✓ Half board accommodation in en-suite rooms
- ✓ Entertainment and excursions



DATES & PRICES

DATES	DAYS	PRICE
24-28 Mar	5 days (Thur-Mon)	£312
18-24 Sept	7 days (Sun-Sat)	£509

Newquay



Eliot Hotel

Part of the Leisureplex Group. Very well situated close to Great Western and Tolcarne beaches only a few yards from the sea front and within easy walking distance of the shops and harbour.

The hotel has an outdoor swimming pool that is heated between May and September. There are 76 bedrooms in total, which all include central heating, a WC, and a bath or shower. All rooms also have tea/coffee making facilities, a hairdryer and TV. A lift serves most rooms, although all floors (inc. ground floor) are split level with some intermediate stairs. There is also free Wi-Fi in public areas.

PRICE INCLUDES

- ✓ All coach travel
- ✓ Half board accommodation in en-suite rooms
- ✓ 1 free lunch
- ✓ Entertainment and excursions



DATES & PRICES

DATES	DAYS	PRICE
17-21 Oct	5 days (Mon-Fri)	£276
Single Supplement £8 per person per night		

Newquay & The Eden Project



NEW FOR 2022

Pentire Hotel

The ideal destination for a more relaxing break with stunning coastal views across the Atlantic the Pentire Hotel is just a stones throw away from Fistral Beach. There is a lift serving all floors giving full access within the hotel. All bedrooms have tea making facilities, private bathroom with bath or shower & WC, TV, hairdryer and internet. The lounge bar is open throughout the day offering light snacks and beverages, the Sixty Bistro which is also open to non-residents is open from midday where you can enjoy cocktails on the sun terrace. The hotel does not provide evening entertainment.

PRICE INCLUDES

- ✓ All coach travel
- ✓ Half board accommodation in en-suite rooms
- ✓ Entertainment and excursions
- ✓ Eden Project



DATES & PRICES

DATES	DAYS	PRICE
22-28 May	7 days (Sun-Sat)	£590
Sea View £57, Single Supplement £42		
Rooms with walk-in showers on request only.		

Bideford



© Blue Sky 4691 flickr

Durrant House Hotel

This hotel is situated near the historical old port of Bideford with views over the Torridge estuary and beyond to the sandy beaches of Instow, this hotel is perfectly located to explore the beautiful rugged coastline, and rolling countryside of North Devon.

There are 125 rooms to choose from and they are all en-suite. The hotel offers fantastic facilities such as an outside pool, or relax and recuperate in our exclusive R&R Beauty Salon & Spa, there is also a lift that serves all floors.

Day 1 Travel direct to you hotel, making comfort stops en-route.

Day 2 Today we visit Barnstaple to explore the market town before making our way on to Ilfracombe.

Day 3 Today we visit Bude.

Day 4 Free Day at Leisure.

Day 5 Sadly today we make our way back home.



PRICE INCLUDES

- ✓ All coach travel
- ✓ Half board accommodation in en-suite rooms
- ✓ Entertainment and excursions

DATES & PRICES

DATES	DAYS	PRICE
10-14 Oct	5 days (Mon-Fri)	£277

Ilfracombe



Imperial Hotel

Part of the Leisureplex Group. With arguably one of the best positions in Ilfracombe, the Imperial Hotel is opposite the splendid Landmark Theatre and conference centre, close to the Tunnels Beaches and shops and just a short walk from the harbour.

This three star hotel boasts extensive lounge areas including television and sun lounge, attractive cosy bar with dancefloor and entertainment most evenings. The lift serves most rooms (a few additional stairs to some rooms.) There is free Wi-Fi in public rooms and central heating throughout. All of the 104 bedrooms are equipped with bath or shower and wc, tea/coffee making facilities, internal telephone, hairdryer and TV with radio channels.



PRICE INCLUDES

- ✓ All coach travel
- ✓ Half board accommodation in en-suite rooms
- ✓ Entertainment and excursions

DATES & PRICES

DATES	DAYS	PRICE
11-15 Jun	5 days (Sat-Wed)	£311
10-14 Aug	5 days (Wed-Sun)	£323
17-21 Sept	5 days (Sat-Wed)	£287
Single Supplement		£11 pppn
Sea View Supplement		£8 pppn

Sidmouth



Royal York & Faulkner Hotel

The Royal York & Faulkner Hotel is situated in the centre of Sidmouth's elegant esplanade adjacent to the picturesque town centre. This hotel has an extremely high standard and is always aiming to find ways to create your dream vacation.

As if the hotel itself wasn't enough, they have included a spa and pool (small extra charge) so this holiday truly couldn't get any better even in your dreams. Many bedrooms have a magnificent view and overlook the sea. Two lifts serve all floors and each well-appointed room has en-suite facilities and all amenities.



PRICE INCLUDES

- ✓ All coach travel
- ✓ Half board accommodation in en-suite rooms
- ✓ Entertainment and excursions

DATES & PRICES

DATES	DAYS	PRICE
29 May-2 Jun	5 days (Sun-Thur)	£418
28 Sept-2 Oct	5 days (Wed-Sun)	£425

Babbacombe



Anchorage Hotel

The Anchorage Hotel is located a few minutes walk away from the many beautiful beaches we have here in South Devon. Babbacombe is the best place to unwind and relax. Our heated outdoor pool is open from May through to the end of September for you to enjoy. All of our 55 bedrooms are en-suite, with TV's, telephones, tea/coffee making facilities. The hotel does have a lift which serves one half of the hotel.



PRICE INCLUDES

- ✓ All coach travel
- ✓ Half board accommodation in en-suite rooms
- ✓ Entertainment and excursions

DATES & PRICES

DATES	DAYS	PRICE
18-22 Apr	5 days (Mon-Fri)	£262
18-22 Jul	5 days (Mon-Fri)	£298
26-30 Sept	5 days (Mon-Fri)	£274

Exmouth



Ashton Court Hotel

The Ashton Court Hotel offers magnificent views over the Esplanade, the Exe Estuary and the scenic rolling hills of the Devon countryside.

The hotel is central heated throughout and has a lift which serves all main floors. For the less energetic there is a private garden to the rear of the building where guests can enjoy a quiet drink in the afternoon sun or there is a reading room. The spacious lounge is south facing and offers a retreat in which to relax after a long day while the lounge bar is a cosy and friendly place in which to have a drink. This hotel takes pride in offering a traditional English menu and a good selection of wines for their guests. Special diets can also be catered for. All 45 bedrooms are en-suite with colour televisions and tea and coffee making facilities, the hotel also has sea view rooms. The hotel is totally non-smoking (including vaping) in all areas.

PRICE INCLUDES

- ✓ All coach travel
- ✓ Half board accommodation in en-suite rooms
- ✓ Entertainment and excursions

DATES & PRICES

DATES	DAYS	PRICE
6-10 Jun	5 days (Mon-Fri)	£301
25-29 Jul	5 days (Mon-Fri)	£301
15-19 Aug	5 days (Mon-Fri)	£301
12-16 Sept	5 days (Mon-Fri)	£301

West Country

Rail & Sail



Tiverton Hotel

The Tiverton Hotel is a Best Western Hotel. Located in the heart of Mid-Devon close to both Taunton and Exeter, our hotel sits within two-and-a-half acres of mature gardens.

We have 69 spacious en-suite bedrooms many on the ground floor. The hotels facilities include free Wi-Fi, popular bar. Unfortunately there is no lift in the Hotel but they do help with luggage if needed.

Day 1 Depart your local pickup point and make our way towards Devon, with comfort stops en-route.

Day 2 A morning free in Tiverton before a gentle cruise along the Grand Western Canal. During the journey you will hear some tales about the canal. Tea and scones will be served during the journey.

Day 3 Join the West Somerset Railway, at Bishops Lydeard for a scenic ride through the Quantock Hills to the resort of Minehead. Free time in Minehead before heading back to the hotel.

Day 4 Free day at leisure or an optional trip to the pretty seaside town of Sidmouth

Day 5 Unfortunately we make our way home after breakfast, with comfort stops en-route.

PRICE INCLUDES

- ✓ All coach travel
- ✓ Half board accommodation in en-suite rooms
- ✓ Cream Tea on arrival
- ✓ Entertainment and excursions

DATES & PRICES

DATES	DAYS	PRICE
6-10 Jun	5 days (Mon-Fri)	£458
Single Supplement £113		

Torquay



Nethway Hotel

Torquay collectively forms the English Riviera, which is renowned for its unusually mild climate and beautiful coastline.

There really is something for everyone on the English Riviera, from long days relaxing on the beach, sight seeing, shopping, coastal walks and days out at many of Torbay's popular tourist attractions.

The Nethway Hotel is set within its own ground and enjoys attractive open views across the bay. This family run hotel is only a short walk into the town centre, seafront, or many of the local attractions.

All bedrooms are en-suite with tea/coffee making facilities and colour TVs, Wi-Fi throughout the hotel. Unfortunately there is no lift in the hotel but they do have a stairlift which gives access to most rooms first floor with some steps incurring. There are a few rooms on the ground floor.

PRICE INCLUDES

- ✓ All coach travel
- ✓ Half board accommodation in en-suite rooms
- ✓ Entertainment and excursions

DATES & PRICES

DATES	DAYS	PRICE
7-11 Feb	5 days (Mon-Fri)	£270
28 Feb-4 Mar	5 days (Mon-Fri)	£270
28 Mar-1 Apr	5 days (Mon-Fri)	£285
18-22 Apr <small>Easter</small>	5 days (Mon-Fri)	£305
20-25 Jun	6 days (Mon-Sat)	£420
4-9 Jul	6 days (Mon-Sat)	£420
18-23 Sept	6 days (Sun-Fri)	£420
24-28 Oct	5 days (Mon-Fri)	£320

TURKEY & TINSEL BREAK

12-16 Dec	5 days (Mon-Fri)	£315
-----------	-------------------	------

Torquay



Metropole Hotel

The Metropole is a Leisureplex Hotel. The Hotel is set in the heart of Torquay, with outdoor swimming pools, a licensed bar, and entertainment, gardens, games room.

The beach is only 500m away, the Riviera international conference centre is even closer, and the town centre is only a ten minute walk or short bus ride away. All bedrooms are en-suite with tea/coffee making facilities and colour TVs. A lift serves most floors but there are steps to some bedrooms.

PRICE INCLUDES

- ✓ All coach travel
- ✓ Half board accommodation in en-suite rooms
- ✓ 1 free lunch & 1 free drink each evening - April only
- ✓ Entertainment and excursions



DATES & PRICES

DATES	DAYS	PRICE
25-29 Apr	5 days (Mon-Fri)	£289
16-20 May	5 days (Mon-Fri)	£317
4-8 Jun	5 days (Sat-Wed)	£341

Single Supplements £Nil (Apr), £11 (May, Jun)
Sea View Supplements £5 (Apr), £8 (May, Jun)



Derwent Hotel

If you enjoy a lively atmosphere where there's always plenty going on, then the Derwent is the place to stay.

You'll find comfortable bedrooms, bright, modern bars and lounges and a friendly informal restaurant. The Starlight lounge is the main hub for TLH night-time entertainment and dancing - so there's never a dull moment at the Derwent. Ideal for families and for people who enjoy being at the centre of things. The Hotel bedrooms all have central heating, en-suite facilities, flat screen TV's, hairdryer, intercom & telephone, tea/coffee making facilities, a bar and a dining room. There is also an indoor swimming pool. There is a lift that serves all floors.



PRICE INCLUDES

- ✓ All coach travel
- ✓ Half board accommodation in en-suite rooms
- ✓ Entertainment and excursions

DATES & PRICES

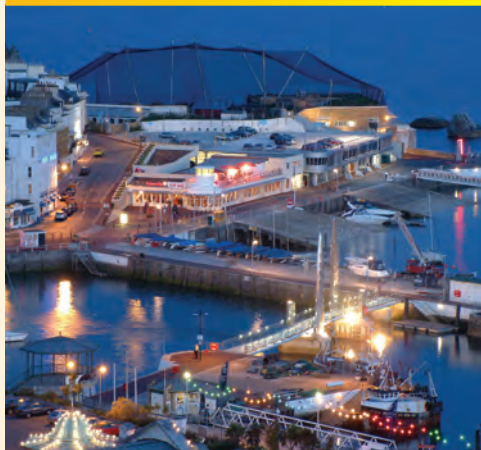
DATES	DAYS	PRICE
10-14 Jan	5 days (Mon-Fri)	£175
31 Jan-4 Feb	5 days (Mon-Fri)	£175
21-25 Feb	5 days (Mon-Fri)	£234
21-25 Mar	5 days (Mon-Fri)	£248
4-8 Apr	5 days (Mon-Fri)	£279
23-27 May	5 days (Mon-Fri)	£300
19-26 Jun	8 days (Sun-Sun)	£470
24-29 Jul	6 days (Sun-Fri)	£375
4-9 Sept	6 days (Sun-Fri)	£375
26-30 Sept	5 days (Mon-Fri)	£306

TURKEY & TINSEL BREAK

7-11 Nov	5 days (Mon-Fri)	£298
----------	------------------	------



Torquay



Regina Hotel

The Regina Hotel part of the Leisureplex Group is situated alongside the harbour and is a short walk from the shops.

All 68 bedrooms have tea/coffee making facilities, telephone, hairdryer and Freeview TV with radio channels. Free Wi-Fi is available in the public areas. There is a relaxing bar lounge and entertainment room with its own bar and dance floor, where entertainment is provided most evenings. There is a lift, which is suitable for wheelchairs, that serves most rooms (15% of rooms are not accessible from the lift). Please note there is no ground floor bedrooms and there are some changes of level on the upper floors. There is a non smoking policy throughout the hotel.



PRICE INCLUDES

- ✓ All coach travel
- ✓ Half board accommodation in en-suite rooms
- ✓ Entertainment and excursions

DATES & PRICES

DATES	DAYS	PRICE
3-9 Jul	7 days (Sun-Sat)	£483
Single Supplement £11 per person per night Sea View Supplement £8 per person per night		

Isle of Wight



Shanklin Hotel, Shanklin

Part of the Leisureplex Group. This is one of the best known hotels on the island with modern facilities like an indoor swimming pool, whirlpool, sauna, games room and indoor bowls area. Also a lift is allocated to most bedrooms.

There are 89 bedrooms with heating, bath or showers, tea/coffee making facilities, TV and a hairdryer in all the rooms. This hotel has a splendid bar with a fantastic restaurant with a dance floor and entertainment most evenings in the bar lounge. There is a non smoking policy throughout the hotel.



PRICE INCLUDES

- ✓ All coach travel
- ✓ Ferry crossings
- ✓ Half board accommodation in en-suite rooms
- ✓ Entertainment and excursions

DATES & PRICES

DATES	DAYS	PRICE
18-25 Jun	8 days (Sat-Sat)	£511
9-13 Jul	5 days (Sat-Wed)	£364
18-24 Sept	7 days (Sun-Sat)	£422
Single Supplement £11 per person per night Sea View Supplement £8 per person per night		

Isle of Wight



The Sands Hotel Sandown

The Sands Hotel is situated right on the esplanade just across the road from the golden sands of Sandown Beach where you will have a friendly welcome by Lee and Shauna Morey.

All the bedrooms have en-suite shower rooms, TV, tea/coffee making facilities, hairdryers, some rooms have balconies overlooking Sandown Bay and Culver Cliffs. The hotel has live entertainment most evenings during main season. There is Wi-Fi throughout the hotel. Unfortunately there is no lift in the hotel, however there are 16 bedrooms on the ground floor.

PRICE INCLUDES

- ✓ All coach travel
- ✓ Ferry crossings
- ✓ Half board accommodation in en-suite rooms
- ✓ Entertainment and excursions

DATES & PRICES

DATES	DAYS	PRICE
25-29 Apr	5 days (Mon-Fri)	£286
2-9 Jul	8 days (Sat-Sat)	£458
30 Jul-6 Aug	8 days (Sat-Sat)	£458
13-19 Aug	7 days (Sat-Fri)	£426
24-30 Sept	7 days (Sat-Fri)	£396

TURKEY & TINSEL BREAK

31 Oct-4 Nov	5 days (Mon-Fri)	£282
28 Nov-2 Dec	5 days (Mon-Fri)	£274

NEW YEAR BREAKS

29 Dec-2 Jan	5 days (Thur-Mon)	£390
--------------	-------------------	------

Paignton



The Hotel Bonair

The Hotel Bonair is situated directly on the sea front with unobstructed views of Paignton Green and beautiful Torbay.

The towns major attractions including the pier, harbour and shops are within easy walking distance. The first class cooking of the hotel forms an important part of the personal service offered by the residential proprietors. There is a licensed bar, bar lounge, a lift, TV lounge and entertainment most nights, all rooms are fully en-suite with tea/coffee making facilities. Some rooms incur steps for access. Free Wi-Fi in hotel.

PRICE INCLUDES

- ✓ All coach travel
- ✓ Half board accommodation in en-suite rooms
- ✓ Entertainment and excursions

DATES & PRICES

DATES	DAYS	PRICE
7-11 Mar	5 days (Mon-Fri)	£242
18-22 Apr <small>Easter</small>	5 days (Mon-Fri)	£278
2-6 May	5 days (Mon-Fri)	£278
21-28 May	8 days (Sat-Sat)	£420
25 Jun-2 Jul	8 days (Sat-Sat)	£430
9-16 Jul	8 days (Sat-Sat)	£430
30 Jul-6 Aug	8 days (Sat-Sat)	£430
27 Aug-3 Sept	8 days (Sat-Sat)	£420
26-30 Sept	5 days (Mon-Fri)	£260

TURKEY & TINSEL BREAK

14-18 Nov	5 days (Mon-Fri)	£280
-----------	------------------	------

Sea View Supplement £2 per person per night
Sea View Balcony £3 per person per night

Paignton



Cambria Hotel

You are sure of a warm welcome at the Cambria Hotel, which is situated on Paignton seafront with magnificent views over Torbay.

The cuisine is excellent and plentiful with a choice of menu and is personally supervised by the owners, the Gregory Family whose main concern is that you enjoy your holiday at the Cambria. All rooms are fully en-suite and have tea/coffee making facilities. There is also a lift to serve all floors.

PRICE INCLUDES

- ✓ All coach travel
- ✓ Half board accommodation in en-suite rooms
- ✓ Entertainment and excursions

DATES & PRICES

DATES	DAYS	PRICE
14-18 Apr <small>Easter</small>	5 days (Thur-Mon)	£305
4-11 Jun	8 days (Sat-Sat)	£435
18-25 Jun	8 days (Sat-Sat)	£435
30 Jul-6 Aug	8 days (Sat-Sat)	£435
20-27 Aug	8 days (Sat-Sat)	£435
3-10 Sept	8 days (Sat-Sat)	£435
3-7 Oct	5 days (Mon-Fri)	£310

TURKEY & TINSEL BREAK

7-11 Nov	5 days (Mon-Fri)	£345
----------	------------------	------

NEW YEAR BREAK

30 Dec-3 Jan	5 days (Fri-Tue)	£415
--------------	------------------	------

Weymouth



The Carlton Hotel

Ideally situated on the esplanade with lovely views of Weymouth's Bay.

The hotel has a well stocked bar with lovely sea views where you can sit and relax or, for the more energetic you can enjoy the dance floor, dancing the night away to live entertainment provided most nights. The hotel is fully central heated and a lift serves all floors. All bedrooms have TV, tea and coffee making facilities and are en-suite. There are a number of sea view and balcony rooms which are available on request. The delightful Tudor style dining room offers good, homecooked food with a wide varied menu and special diets catered for.

PRICE INCLUDES

- ✓ All coach travel
- ✓ Half board accommodation in en-suite rooms
- ✓ Entertainment and excursions

DATES & PRICES

DATES	DAYS	PRICE
14-18 Feb	5 days (Mon-Fri)	£191
28 Feb-4 Mar	5 days (Mon-Fri)	£191
14-18 Mar	5 days (Mon-Fri)	£191
15-19 Apr <small>Easter</small>	5 days (Fri-Tues)	£248
20-24 Apr	5 days (Wed-Sun)	£248
2-7 May	6 days (Mon-Sat)	£310
28 May-4 Jun <small>Bank Holiday</small>	8 days (Sat-Sat)	£403
18-25 Jun	8 days (Sat-Sat)	£413
2-9 Jul	8 days (Sat-Sat)	£423
16-23 Jul	8 days (Sat-Sat)	£423
6-13 Aug	8 days (Sat-Sat)	£423
13-20 Aug	8 days (Sat-Sat)	£423
27 Aug-2 Sept	7 days (Sat-Fri)	£336
12-16 Sept	5 days (Mon-Fri)	£264
26-30 Sept	5 days (Mon-Fri)	£255
17-21 Oct	5 days (Mon-Fri)	£255
TURKEY & TINSEL BREAKS		
14-18 Nov	5 days (Mon-Fri)	£264
5-9 Dec	5 days (Mon-Fri)	£264
CHRISTMAS & NEW YEAR BREAKS		
23-27 Dec	5 days (Fri-Tue)	£469
30 Dec-3 Jan	5 days (Fri-Tue)	£387



© VisitEngland - Weymouth and Portland Borough Council - John Snelling

Bournemouth



Ocean Beach & Spa Hotel

The Ocean Beach Hotel & Spa is only minutes walk from seven miles of award winning sandy beaches and close to the town centre, gardens and vibrant café society of Bournemouth.

Decorated in a modern, rustic beach style with onsite Day Spa and Italian Café, this new concept Hotel & Spa offers visitors to Bournemouth a great venue to explore from. The hotel has 64 en-suite rooms, many offering panoramic sea views and are all equipped with TV and complimentary tea/coffee making facilities.

PRICE INCLUDES

- ✓ All coach travel
- ✓ Half board accommodation in en-suite rooms
- ✓ Entertainment and excursions



DATES & PRICES

DATES	DAYS	PRICE
16-20 May	5 days (Mon-Fri)	£334
TURKEY & TINSEL BREAK		
7-11 Nov	5 days (Mon-Fri)	£314
Sea View Supplement £40 per room per night		

Bournemouth



© Flickr - JackPeasePhotography

Royal Bath Hotel

The Royal Bath Hotel, which is owned by the Britannia Group, was the first hotel in Bournemouth and embodies the finest traditions of first class comfort and hospitality. It has a fantastic position on the sea front right next to the pier. All rooms are en-suite with tea/coffee making facilities.

PRICE INCLUDES

- ✓ All coach travel
- ✓ Half board accommodation in en-suite rooms
- ✓ Entertainment and excursions

The hotel is ideally positioned for visiting many of the varied attractions on offer, whilst offering a more peaceful opportunity to walk along its lovely promenade. The hotel includes a lounge bar and a fantastic view over the Poole Bay. The health and leisure club offers spa treatment, a pool and a gym. Although a lift does serve most rooms, there is a flight of steps to access the lift, and some rooms may still incur steps.



DATES & PRICES

DATES	DAYS	PRICE
18-22 Apr <small>Easter</small>	5 days (Mon-Fri)	£302
20-24 Jun	5 days (Mon-Fri)	£368
8-12 Aug	5 days (Mon-Fri)	£338
3-7 Oct	5 days (Mon-Fri)	£302

Bournemouth



Suncliff Hotel

The Suncliff is situated on the east cliffs of Bournemouth. It is within easy walking distance of Bournemouth's stunning blue flag beaches and award winning gardens.

The hotel has 99 bedrooms many with fabulous sea views, all rooms have en-suite bathrooms, televisions, hairdryer and a hot drinks refreshment tray. There are numerous lounges on the ground floor that provide live entertainment most evenings, pool table, a TV/reading lounge and a conservatory which is the ideal setting for afternoon tea.

The Suncliffs indoor leisure complex offers an indoor heated pool, sauna and mini gym. There is also a lift that serves all floors.

PRICE INCLUDES

- ✓ All coach travel
- ✓ Half board/All Inclusive accommodation in en-suite rooms
- ✓ Entertainment and excursions
- ✓ 3 x lunches (Jan, Feb & Mar)
- ✓ Inclusive Bar 6-9pm (Jan, Feb & Mar)

DATES & PRICES

DATES	DAYS	PRICE
24-28 Jan <i>All Inclusive</i>	5 days (Mon-Fri)	£244
28 Feb-4 Mar <i>All Inclusive</i>	5 days (Mon-Fri)	£256
28 Mar-1 Apr <i>All Inclusive</i>	5 days (Mon-Fri)	£284
11-15 Apr	5 days (Mon-Fri)	£302
30 May-3 Jun	5 days (Mon-Fri)	£322
27 Jun-1 Jul	5 days (Mon-Fri)	£338
26-30 Sept	5 days (Mon-Fri)	£338
17-21 Oct	5 days (Mon-Fri)	£306

TURKEY & TINSEL BREAKS

21-25 Nov	5 days (Mon-Fri)	£310
12-16 Dec	5 days (Mon-Fri)	£278

CHRISTMAS & NEW YEAR BREAKS

23-27 Dec	5 days (Fri-Tue)	£567
30 Dec-2 Jan	4 days (Fri-Mon)	£436

Sea View Supplement £40 per room per night



Brighton



Royal Albion Hotel

The Royal Albion Hotel, which is owned by the Britannia Group, is a magnificent example of stunning Regency style architecture in the heart of Brighton. Built in 1862, this family run hotel still holds much of its original stature and charm.

Located opposite the famous Brighton Pier this hotel is ideally located within walking distance to all of Brighton's main tourist and commercial attractions such as the Brighton Conference Centre, the Palace Pier and Brighton Pavilion.

At The Royal Albion Hotel all bedrooms have central heating, en-suite facilities, flat screen TV's with radio, hairdryer, intercom & telephone, tea and coffee making facilities, a bar and dining room. There is also a lift that serves all floors.

PRICE INCLUDES

- ✓ All coach travel
- ✓ Half board accommodation in en-suite rooms
- ✓ Entertainment and excursions



DATES & PRICES

DATES	DAYS	PRICE
23-27 May	5 days (Mon-Fri)	£306
25-29 Jul	5 days (Mon-Fri)	£330
12-16 Sept	5 days (Mon-Fri)	£322
24-28 Oct	5 days (Mon-Fri)	£322

Southsea



The Royal Beach Hotel

Carefully restored in 2003, period elegance combines with modern comfort in this Victorian seafront hotel. Situated adjacent to the beach in Southsea the Best Western Royal Beach Hotel offers superb views across the Solent and is just a few minutes walk to the shops.

Bedrooms have private facilities, TV's and tea/coffee making facilities. There is a lift to all floors. The dining room is decorated comfortably and offers good cooked food with a wide varied menu. The hotel has a well stocked bar where you can sit and enjoy a drink or two. Unfortunately, there is no entertainment at this hotel in the evenings.

PRICE INCLUDES

- ✓ All coach travel
- ✓ Half board accommodation in en-suite rooms
- ✓ Excursions



DATES & PRICES

DATES	DAYS	PRICE
31 Oct-4 Nov	5 days (Mon-Fri)	£359

Sea view supplement £20 per room per night

Ironbridge & Severn Valley



Mercure Telford Hotel

This hotel provides everything needed for this break away with its convenience and amenities. It is close to a number of transport links making it an ideal base for this getaway. The Mercure Hotel brand name offers a trustworthy reputation for a chain of nationwide hotels so you can be sure to expect good quality and value for money. Rooms are recently refurbished and modern décor and local culture in mind and all rooms provide en-suite facilities (most with showers), televisions, and tea/coffee making facilities. The hotel also houses its own leisure facilities with a gym and swimming pool and has a lift which services all floors but also has ground floor rooms available.



Day 1 Depart local pick up point and make our way to the hotel stopping off for comfort stops and to arrive in time for evening meal to be served.

PRICE INCLUDES

- ✓ All coach travel
- ✓ Half board accommodation in en-suite rooms
- ✓ Museum admission & Railway Ticket
- ✓ Excursions

Day 2 Today after breakfast we visit Ironbridge Gorge Museum and Blists Hill. Take a stroll onto the bridge then explore the food stores, craft boutiques and eateries nestled alongside the beautiful River Severn. In the afternoon we travel the short distance to Blists Hill Victorian Town. Step back in time to experience sights, sounds, smells and tastes of the Victorian age.

Day 3 Today we travel to the famous Severn Valley Railway. We join the train at Bridgnorth for the 16 mile run to Kidderminster, following the River Severn through glorious and unspoilt countryside. In the afternoon we visit the thriving medieval market town of Ludlow, described by poet John Betjeman as "probably the loveliest town in England with it's hill of Georgian houses ascending from the River Teme to the great tower of the cross-shaped church, rising behind a classic market building".

Day 4 Free day in Shrewsbury.

Day 5 Sadly after breakfast we return home.

DATES & PRICES

DATES	DAYS	PRICE
23-27 May	5 days (Mon-Fri)	£412
Single Supplement £85		

Bognor Regis



Royal Norfolk Hotel

Part of the Leisureplex Group.

A warm welcome awaits you at the Royal Norfolk where we have a long tradition as one of Bognor Regis's leading hotels. The Hotel is within easy reach of many West Sussex attractions, prominently located in an enviable sea front location, set in its own grounds.

The Royal Norfolk has 61 bedrooms with some rooms on the ground floor, all with central heating, en-suite facilities, TV's, hairdryer, intercom & telephone, tea and coffee making facilities. There is a lift that serves all floors, however some rooms will incur steps. There is a non smoking policy throughout the hotel.



DATES & PRICES

DATES	DAYS	PRICE
25-29 May	5 days (Wed-Sun)	£327
24-28 Oct	5 days (Mon-Fri)	£295

Single Supplements (per person per night) - £11 (May), £8 (Oct)

Sea View Supplements (per person per night) - £8 (May), £5 (Oct)

Eastbourne



NEW FOR 2022

Haddon Hall Hotel

Situated at the sea front end of Devonshire Place across the road from the Bandstand. Served by a lift, all bedrooms are central heated with bath or shower & WC, tea/coffee making facilities, hairdryers and colour TV. The newly refurbished ballroom offers an extensive dance floor with entertainment on most evenings.

PRICE INCLUDES

- ✓ All coach travel
- ✓ Half board accommodation in en-suite rooms
- ✓ Entertainment and excursions



DATES & PRICES

DATES	DAYS	PRICE
28 Mar-1 Apr	5 days (Mon-Fri)	£280
23-28 May	6 days (Mon-Sat)	£370
3-7 Oct	5 days (Mon-Fri)	£312

TURKEY & TINSEL BREAK

5-9 Dec	5 days (Mon-Fri)	£338
---------	------------------	------

Eastbourne



NEW FOR 2022

Queens Hotel

This magnificent Victorian hotel is situated in an outstanding position overlooking the pier. The Princes Suite provides entertainment most evenings with a large dance floor and bar, it also has a sun lounge and two restaurants. There are two lifts which serves all floors although the ground and lower floors are split level where there are some stairs. All bedrooms are central heated with bath or shower & WC and offer tea/coffee making facilities, hairdryer and freeview TV.

PRICE INCLUDES

- ✓ All coach travel
- ✓ Half board accommodation in en-suite rooms
- ✓ 1 Free lunch & 1 free drink March
- ✓ Entertainment and excursions



DATES & PRICES

DATES	DAYS	PRICE
7-11 Mar	5 days (Mon-Fri)	£279
9-13 May	5 days (Mon-Fri)	£343
18-22 Jul	5 days (Mon-Fri)	£375
17-21 Sept	5 days (Sat-Wed)	£331

Single Supplement NIL (Mar), £11 (May, Jul, Sept)
Sea View Supplement £5 (Mar), £8 (May, Jul, Sept)

Eastbourne



© VisitEngland-VisitEastbourne

The Cumberland Hotel

The Cumberland is one of Eastbourne's Premier Hotels, commanding a wonderful position on the seafront overlooking the famous flower-decked promenade, the bandstand and the English Channel. Our 72 en-suite bedrooms, the majority of which have sea views, some with shared balcony are tastefully furnished all with colour TV, radio, direct dial telephone, tea/coffee making facilities and hairdryers. We have a lift to all floors. Our head chef, one of Eastbourne's best, prepares excellent cuisines with the utmost care, using only the finest ingredients, complemented by our extensive wine list.

PRICE INCLUDES

- ✓ All coach travel
- ✓ Half board accommodation in en-suite rooms
- ✓ Entertainment and excursions



DATES & PRICES

DATES	DAYS	PRICE
11-15 Apr	5 days (Mon-Fri)	£305
9-13 May	5 days (Mon-Fri)	£309
4-11 Jun	8 days (Sat-Sat)	£459
16-23 Jul	8 days (Sat-Sat)	£466
21-26 Aug	6 days (Sun-Fri)	£370
18-23 Sept	6 days (Sun-Fri)	£357
10-14 Oct	5 days (Mon-Fri)	£302

TURKEY & TINSEL BREAK

14-18 Nov	5 days (Mon-Fri)	£306
-----------	------------------	------

Sea View Supplement £5 per person per night
Balcony Supplement £20 per person per night

Cotswolds Tour Bosworth Hall Hotel & Spa



Bosworth Hall

Bosworth Hall Hotel & Spa is owned by the Britannia Group and is located in the heart of the English countryside, and is one of the most impressive and striking hotels in Market Bosworth. Set in 11 acres of beautiful landscaped gardens, the Grade II listed mansion which houses the hotel dates back from the 17th century and still retains many of its original features, making for a visually impressive location. The building's grand features continues on the inside. The area surrounding the Bosworth Hall Hotel & Spa also offers plenty for guests to see and do. The nearby historic village of Market Bosworth, located just a stroll away from the front door of the hotel, is famous for its flower display, and also hosts a range of galleries and antique shops well worth visiting.

Whilst at the hotel, guests can also enjoy the Spindles Health and Leisure Club, with its hot tub, steam room and sauna. All rooms are en-suite with tea/coffee making facilities, hairdryer, TV's and Wi-Fi. There is a lift which serves all floors.



Itinerary - 5 day break

Day 1 We depart our local pick up point calling at Lichfield for a lunch stop before making our way on to our hotel in time for our evening meal.

Day 2 After breakfast we will make our way on the Cotswolds Villages including Bourton-on-the-Water and Moreton-in-the-Marsh.

Day 3 Today after breakfast we make our way to Stratford upon Avon for you to explore this lovely town.

Day 4 Free day at leisure.

Day 5 Sadly after breakfast we leave to make our way home.

PRICE INCLUDES

- ✓ All coach travel
- ✓ Half board accommodation in en-suite rooms
- ✓ Excursions



DATES & PRICES

DATES	DAYS	PRICE
23-27 May	5 days (Mon-Fri)	£277
11-15 Jul	5 days (Mon-Fri)	£277
19-23 Sept	5 days (Mon-Fri)	£277
10-14 Oct	5 days (Mon-Fri)	£277

Folkestone



Grand Burstin Hotel

The Grand Burstin Hotel is superbly located on the seafront overlooking Folkestone's picturesque harbour. All bedrooms, many with spectacular sea views, include en-suite bathrooms, television hairdryer and tea/coffee making facilities.

The Grand Burstin Hotel also has a lift that serves all floors.

PRICE INCLUDES

- ✓ All coach travel
- ✓ Half board accommodation in en-suite rooms
- ✓ Entertainment and excursions



DATES & PRICES

DATES	DAYS	PRICE
18-22 Jul	5 days (Mon-Fri)	£262
19-23 Sept	5 days (Mon-Fri)	£250

London

Mothers Day Lunch & River Cruise Weekend



The Tower Hotel

The Tower Hotel is nestled between the River Thames, St Katherine Docks and alongside the world heritage site, The Tower of London, boasting unparalleled views of the iconic Tower Bridge.

PRICE INCLUDES

- ✓ All coach travel
- ✓ Bed & breakfast
- ✓ Cruise with lunch - Sun

The location and excellent choice of transport connections put you at the centre of this vibrant city, making it quick, convenient and most importantly, easy to experience the very best of what London has to offer, all rooms are en-suite with TV, tea/coffee making facilities and free Wi-Fi throughout the hotel. The hotel has a lift that serves all floors.

Saturday Depart your local pickup point and make our way to London stopping off at a comfort stop on the way. Arrive at the Tower Hotel in London - once check-in is complete, you are free to explore the city and the sights.

Sunday After breakfast, we make our way to the city cruises ready for our Mothers Day lunch River Cruise which is approximately an hour and fifteen minutes. We then depart from the river and make our way back home, calling at a comfort stop on the way.



DATES & PRICES

DATES	DAYS	PRICE
26-27 Mar	2 days (Sat-Sun)	£167
Single Supplement £80		

Weston Super Mare



Sandringham Hotel

The Sandringham Hotel is centrally situated on the sea front overlooking the bay and the new pier, and is within 200 yards of the winter gardens, and only 100 yards away from the Sovereign shopping centre.

All rooms are en-suite with colour TV's, tea/coffee making facilities and telephones. The Chaplins Bar holds a warm atmosphere where the entertainment takes place. There is a lift to all floors.

PRICE INCLUDES

- ✓ All coach travel
- ✓ Half board accommodation in en-suite rooms
- ✓ Entertainment and excursions



DATES & PRICES

DATES	DAYS	PRICE
31 Jan-4 Feb	5 days (Mon-Fri)	£192
28 Mar-1 Apr	5 days (Mon-Fri)	£226
24-29 Jul	6 days (Sun-Fri)	£320
28 Aug-2 Sept	6 days (Sun-Fri)	£325
3-7 Oct	5 days (Mon-Fri)	£266

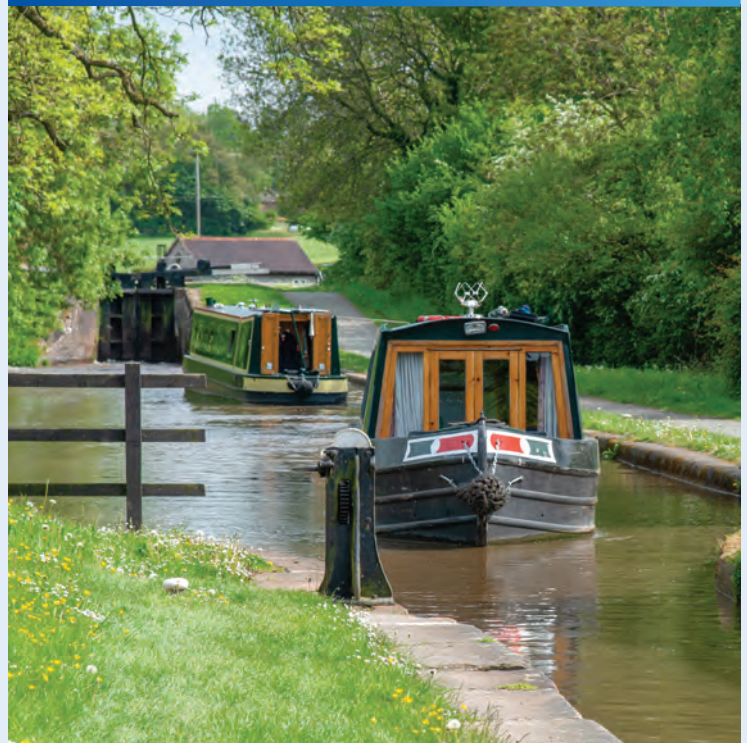
TURKEY & TINSEL BREAK

31 Oct-4 Nov	5 days (Mon-Fri)	£272
5-9 Dec	5 days (Mon-Fri)	£260

TWIXMAS BREAK

27-30 Dec	4 days (Tue-Fri)	£219
-----------	------------------	------

Mold



Beaufort Park Hotel

The 3 star Beaufort Park Hotel offers a warm welcome, friendly staff and relaxed atmosphere. The hotel is located 2 miles from the historic market town of Mold.

The hotel has 2 restaurants, a lounge and bar. All bedrooms are en-suite, but no walk in showers, with tea/coffee making facilities, hairdryer and TV. Although the hotel does not have a lift, half of the bedrooms are on the ground floor. The hotel offers light entertainment on some evenings.

PRICE INCLUDES

- ✓ All coach travel
- ✓ Half board accommodation in en-suite rooms
- ✓ Entertainment and excursions

Day 1 Travel to the hotel via Liverpool crossing through the Mersey Tunnel and continue to the hotel in time for dinner.

Day 2 Today we travel over the spectacular Horseshoe Pass to Llangollen. There we board a motorised canal boat and take a trip along the "Stream in the Sky". The boat travels through the beautiful valley of Llangollen and across the famous Pontcysyllte aqueduct built by Thomas Telford and granted UNESCO World Heritage status in 2009. (CANAL RIDE INCLUDED).

Day 3 After breakfast today we take a drive into the charming Roman walled city of Chester, with plenty of free time to explore the shops and also what the city has to offer.

Day 4 Today's excursion is to the lovely town of Betws-y-Coed before returning back to the hotel for the evening meal.

Day 5 Unfortunately we have to leave the Welsh countryside behind us and head back home.

DATES & PRICES

DATES	DAYS	PRICE
5-9 Sept	5 days (Mon-Fri)	£372

Porthcawl



**Visit to
Royal Mint Included**

Seabank Hotel

Part of the Leisureplex Group. This landmark building commands coastal views to the east, south and west, yet is only a short walk from the centre of Porthcawl. All rooms are en-suite with TV's, tea/coffee making facilities. Lift serves all floors.

Day 1 Depart your local pick up points and make our journey to Porthcawl with a lunch stop in Ross-on-Wye, arriving mid afternoon in Porthcawl.

Day 2 Free day at leisure.

Day 3 Today we visit Llantrisant the home of the Royal Mint for a guided tour, you will look into the Striking Hall where thousands of coins are produced 24 hours a day with the option to strike your own coin to take home with you.

Day 4 Today we visit the City of Swansea and Mumbles, a traditional Victorian seaside at the entrance to the Gower, a beautiful Peninsula and Britain's first designated area of outstanding Natural Beauty.

Day 5 After breakfast we sadly make our journey back home with comfort stops en-route.

PRICE INCLUDES

- ✓ All coach travel
- ✓ Half board accommodation in en-suite rooms
- ✓ Visit to the Royal Mint
- ✓ Entertainment and excursions



DATES & PRICES

DATES	DAYS	PRICE
8-12 Jun	5 days (Wed-Sun)	£366
26-30 Sept	5 days (Mon-Fri)	£294
Single Supplement £11 pppn, Sea View Supplement £8 pppn		

Tenby



**ALL INCLUSIVE
in Feb/Apr/Oct/Nov & Dec**

Belgrave Hotel

Situated on the sea front at Tenby, the Belgrave Hotel is close to all amenities. All bedrooms are en-suite and are carefully furnished with colour TV's and tea/coffee making facilities.

There is a lift in the hotel which stops between floors, there are up to 9 steps to all rooms. There is a lounge overlooking the sea where you can relax in the day and in the evenings enjoy live entertainment and dancing. The Victoria Lounge also overlooks the sea and provides a well stocked, fully licensed bar.

PRICE INCLUDES

- ✓ All coach travel
- ✓ Half board or all inclusive accommodation in en-suite rooms
- ✓ Entertainment and excursions



DATES & PRICES

DATES	DAYS	PRICE
21-25 Feb <i>All Inclusive</i>	5 days (Mon-Fri)	£313
11-15 Apr <i>All Inclusive</i>	5 days (Mon-Fri)	£328
23-28 May	6 days (Mon-Sat)	£384
26 Jun-2 Jul	7 days (Sun-Sat)	£435
29 Aug-3 Sept	6 days (Mon-Sat)	£392
24-28 Oct <i>All Inclusive</i>	5 days (Mon-Fri)	£340

TURKEY & TINSEL BREAKS

21-25 Nov <i>All Inclusive</i>	5 days (Mon-Fri)	£340
5-9 Dec <i>All Inclusive</i>	5 days (Mon-Fri)	£305
Sea View Supplement £5 per person per night		

Llandudno



The Four Oaks Hotel

The Four Oaks Hotel has 55 bedrooms all en-suite with TV and tea/coffee making facilities and hairdryer. A lift serves all floors. There is entertainment on most nights. The hotel is situated in the centre of Llandudno, close to the theatre and shops.

PRICE INCLUDES

- ✓ All coach travel
- ✓ Half board accommodation in en-suite rooms
- ✓ Entertainment and excursions

DATES & PRICES

DATES	DAYS	PRICE
28 Feb-4 Mar	5 days (Mon-Fri)	£240
11-14 Mar	4 days (Fri-Mon)	£220
28 Mar-1 Apr	5 days (Mon-Fri)	£260
8-11 Apr	4 days (Fri-Mon)	£220
25-29 Apr	5 days (Mon-Fri)	£260
2-6 May	5 days (Mon-Fri)	£278
28 May-4 Jun	8 days (Sat-Sat)	£414
20-24 Jun	5 days (Mon-Fri)	£386
20-27 Aug	8 days (Sat-Sat)	£435
5-9 Sept	5 days (Mon-Fri)	£300
10-14 Oct	5 days (Mon-Fri)	£260
21-24 Oct	4 days (Fri-Mon)	£220

TURKEY & TINSEL BREAKS

11-14 Nov	4 days (Fri-Mon)	£240
28 Nov-2 Dec	5 days (Mon-Fri)	£284
16-19 Dec	4 days (Fri-Mon)	£220

CHRISTMAS & NEW YEAR BREAK

23-27 Dec	5 days (Fri-Tue)	£445
30 Dec-2 Jan	4 days (Fri-Mon)	£350

Sea View Supplement £5 per person per night

Llandudno



Hydro Hotel

Part of the Leisureplex Group. The Hydro Hotel is situated on the sea front overlooking Llandudno Bay, close to the Aberconwy Centre and a short walk to the shops, the Pier and Happy Valley Gardens. All bedrooms are en-suite and have tea/coffee making facilities, hairdryer and TV. There are some ground floor rooms. There is a lift in the hotel, there are several steps to the front of the hotel but the hotel does have a wheelchair lift from street level into Reception. Please note the entire hotel is a no smoking area.

PRICE INCLUDES

- ✓ All coach travel
- ✓ Half board accommodation in en-suite rooms
- ✓ Entertainment and excursions
- ✓ One free lunch and one drink every evening in February & March



DATES & PRICES

DATES	DAYS	PRICE
14-18 Feb	5 days (Mon-Fri)	£254
14-18 Mar	5 days (Mon-Fri)	£274
9-13 May	5 days (Mon-Fri)	£326
7-11 Sept	5 days (Wed-Sun)	£314
10-14 Oct	5 days (Mon-Fri)	£286

Single Supplements pppn £NIL (Feb, Mar), £11 (May, Sept, Oct)
Sea View Supplements pppn £5 (Feb, Mar), £8 (May, Sept, Oct)

Llandudno



Chatsworth House Hotel

The Chatsworth House Hotel enjoys a magnificent seafront position at the centre of Llandudno's Promenade, and is a stones throw away from the main shops and the pier.

All bedrooms have en-suite bathrooms and offer an array of comforts, including TV's, tea/coffee making facilities. There is a lift to all bedrooms and some ground floor rooms with many rooms that have splendid views of the bay. The Chatsworth House Hotel offers a heated indoor swimming pool. We do not allow scooters or wheelchairs upstairs.

PRICE INCLUDES

- ✓ All coach travel
- ✓ Half board accommodation in en-suite rooms
- ✓ Entertainment and excursions

DATES & PRICES

DATES	DAYS	PRICE
14-18 Mar	5 days (Mon-Fri)	£224
4-8 Apr	5 days (Mon-Fri)	£258
25-29 Apr	5 days (Mon-Fri)	£268
23-27 May	5 days (Mon-Fri)	£278
12-17 Jun	6 days (Sun-Fri)	£345
9-16 Jul	8 days (Sat-Sat)	£452
24-30 Jul	7 days (Sun-Sat)	£406
7-12 Aug	6 days (Sun-Fri)	£365
21-27 Aug	7 days (Sun-Sat)	£454
18-23 Sept	6 days (Sun-Fri)	£360
3-7 Oct	5 days (Mon-Fri)	£293

TURKEY & TINSEL BREAKS

14-18 Nov	5 days (Mon-Fri)	£281
5-9 Dec	5 days (Mon-Fri)	£251

Barmouth



NEW FOR 2022

Min-y-Mor Hotel

Amazing location directly on the beautiful Barmouth Beach. Min-Y Mor Hotel is ideally located on the promenade town of Barmouth, in North Wales. The Hotel has a licensed restaurant bar lounge/bar, family room, and is open to all non-residents as well as residents' guests.

PRICE INCLUDES

- ✓ All coach travel
- ✓ Half board accommodation in en-suite rooms
- ✓ Entertainment and excursions

The restaurant has a good reputation locally and among visitor's alike with our chefs traditional dishes. All rooms in the hotel are en-suite and tea/coffee making facilities, colour TV and telephones. Unfortunately, this hotel does not have a lift.



DATES & PRICES

DATES	DAYS	PRICE
25-29 Apr	5 days (Mon-Fri)	£399
13-17 Jun	5 days (Mon-Fri)	£399
29 Aug-2 Sept	5 days (Mon-Fri)	£399
3-7 Oct	5 days (Mon-Fri)	£399
Single Supplement £8 per person per night		

Llanberis Welsh Rail & Sail



BACK BY DEMAND

Royal Victoria Hotel

This hotel is perfectly located for anyone with a liking to the beauty of countryside, close to Llanberis and at the foot of Snowdon.

The 104 fully equipped en suite bedrooms were beautifully designed with comfort and relaxation in mind. All rooms have modern décor, telephone, freeview television, tea/coffee making facilities, iron/ironing board and hairdryer. The majority of rooms have a bath and shower though some have shower only. The hotel also has a lift that services all floors. You can also look forward to a great dining experience with a selection of food and drink from a variety of menus found in the Padarn and Victoria restaurants.

Day 1 Travel to North Wales with a stop in the medieval city of Chester before continuing to the hotel.

Day 2 After breakfast you will have free time in Llanberis following our trip a return journey on the Snowdon Mountain Railway and savour breathtaking views on the summit (included in price).

Day 3 Today after breakfast we make our way for a scenic drive to Anglesey where we will then continue to Puffin Island Wildlife Cruise where we will have a 75 minute cruise to look at the wildlife in their natural habitat - look out for the sea birds, grey seals and possibly bottlenose dolphins.



Day 4 A full day at leisure in the popular seaside town of Llandudno where you can treat yourself to a ride on the Great Orme Tramway or explore the beaches and the Victorian town of Llandudno has to offer.

Day 5 Sadly after breakfast we make our way home.

PRICE INCLUDES

- ✓ All Coach Travel
- ✓ Half Board
Accommodation in en-suite rooms
- ✓ Excursions and entertainment



DATES & PRICES

DATES	DAYS	PRICE
2-6 May	5 days (Mon-Fri)	£468
Single Supplement £113		

Little Boats & Trains of Norfolk



Holiday Inn, Norwich

A 4 star modern hotel on 3 floors with restaurant, lounge areas and bar. The hotel is situated near to Norwich airport around 3 miles from the city centre. All rooms have tea/coffee making facilities, flat screen TV, and hairdryers. There is an indoor swimming pool, sauna and gym

Day 1 Depart your local pick up point and we travel directly to the hotel.

Day 2 We take a morning ride on the steam-hauled 'Poppy Line', a nickname given to the North Norfolk Railway because of the fields



of poppies seen during the late spring and early summer. We travel to Cromer where there's free time to explore the pretty seaside town. In the afternoon we travel to the Thursford Collection, the worlds largest collection of steam engines, organs and fairground attractions hidden away in the hearts of Norfolk's countryside. There's an opportunity to hear resident organist Robert Wolfe playing the mighty Wurlitzer in a unique 30 minute performance.

Day 3 This morning after breakfast we will take a ride on the fascinating Bure Valley Railway, a 15" narrow gauge railway that runs for 9 miles through the countryside to Wroxham. We then take a relaxing circular cruise on Wroxham Broad.

Day 4 Free day in Norwich.

Day 5 Sadly after breakfast we depart and travel home.

PRICE INCLUDES

- ✓ All coach travel
- ✓ Half board accommodation in en-suite rooms
- ✓ Excursions as per itinerary

DATES & PRICES

DATES	DAYS	PRICE
16-20 May	5 days (Mon-Fri)	£402
Single Supplement £85		

Great Yarmouth



**HALF PRICE BAR
Feb-Mar**

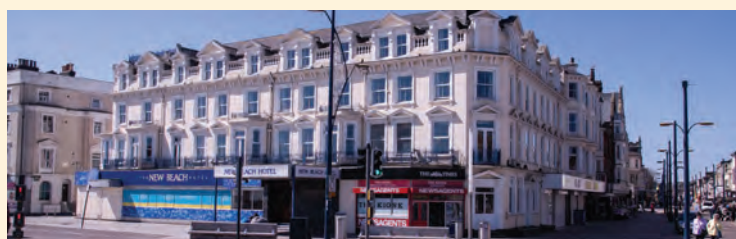
New Beach Hotel

Part of the Leisureplex Group. Situated in Great Yarmouth's most central and lively location, on the sea front opposite Britannia Pier and adjacent to the shops and resort amenities.

The hotel features a spacious bar/lounge, with entertainment on most evenings, and a magnificent restaurant. Each bedroom has central heating with bath or shower, and a WC. On top of this, there is an internal telephone, hairdryer, TV and tea/coffee making facilities in every room. There is also free Wi-Fi, a lift serves most rooms.

PRICE INCLUDES

- ✓ All coach travel
- ✓ Half board accommodation in en-suite rooms
- ✓ Entertainment and excursions
- ✓ 2 free lunches on Nov Turkey & Tinsel date
- ✓ 1 lunch & 1 drink each evening Feb & Mar
- ✓ 1 Free lunch February, March & October



DATES & PRICES

DATES	DAYS	PRICE
28 Feb-4 Mar	5 days (Mon-Fri)	£232
21-25 Mar	5 days (Mon-Fri)	£244
25-29 May	5 days (Wed-Sun)	£295
11-15 Jul	5 days (Mon-Fri)	£351
25-30 Sept	6 days (Sun-Fri)	£300
24-28 Oct	5 days (Mon-Fri)	£267

TURKEY & TINSEL BREAKS

21-25 Nov 5 days (Mon-Fri) £304

Single Supplements (per person per night)
£Nil (Feb, Mar), £11 (May, Jul, Sept), £8 (Oct, Nov)
Sea View Supplements (per person per night)
£5 (Feb, Mar, Oct, Nov), £8 (May, Jul, Sept)

Cromer



Hotel De Paris

Part of the Leisureplex Group. This is an unusual yet delightful hotel with modern facilities like free Wi-Fi, games room, TV room and there is also a lift. There are 61 bedrooms with heating, bath or showers, tea/coffee making facilities, TV and radio channels, there is an excellent view from most of the rooms.

PRICE INCLUDES

- ✓ All coach travel
- ✓ Half board accommodation in en-suite rooms
- ✓ Entertainment and excursions
- ✓ 1 free lunch Apr & Oct

The hotel is close to the shops and historic parish church and overlooking the beach and pier. Also the hotel has a fantastic restaurant with a small dance floor and an attractive lounge and cocktail bar. There is a non smoking policy throughout the hotel.



DATES & PRICES

DATES	DAYS	PRICE
25-29 Apr	5 days (Mon-Fri)	£303
24-28 Oct	5 days (Mon-Fri)	£287

TURKEY & TINSEL BREAKS

11-14 Nov 4 days (Fri-Mon) £274

Single Supplements (per person per night) £NIL (Apr), £8 (Oct, Nov)
Sea View Supplements £5 (Apr, Oct, Nov)

Norfolk - Norwich Royal Retreat



© Flickr - Glen Bowman

NEW FOR 2022

Mercure Norwich

This 4 star hotel is located perfectly for a trip to enjoy everything Norfolk has to offer, just 3 miles from Norwich and a short distance from the Norfolk Broads and Great Yarmouth. The combination of a reputable brand name, convenience and location makes your stay at the Mercure Hotel Norwich ideal for a carefree escape and adds to this with its beautifully designed gardens.

All bedrooms offer comfortable beds, HD TVs, en-suite bathrooms, complimentary Wi-Fi, hairdryer and tea/coffee making facilities. The hotel also has access to restaurant and lounge. The hotel does not have a lift but some ground floor rooms are available.

The events packed into this trip make it very unique and perfect for the sightseeing traveller and if you love all things Royal, this trip would be perfect with the chance of seeing an inside to one of the most prestigious homes in Britain.



Itinerary

Day 1 We depart our local pick up points and make our way down to Norwich to our hotel, having some time to settle in before our evening meal.

Day 2 Today we embark on a unique trip out as we visit the Sandringham Estate, Her Majesty's Norfolk retreat. We have admission into the estate including the House, Gardens and Museum to give you the full experience.

Day 3 After breakfast we head down to Wroxham for a 90 minute cruise along the Norfolk broads to enjoy the infamous canals. After this, we will have a visit to Wroxham Barns.

Day 4 Today we will visit the seaside as we will enjoy a free day in Great Yarmouth to indulge in everything a Great British holiday has to offer!

Day 5 Unfortunately, after a great week away we have to head home after breakfast.

DATES & PRICES

DATES	DAYS	PRICE
11-15 Aug	5 days (Thur-Mon)	£408
Single Supplement £91		

PRICE INCLUDES

- ✓ Admission to Sandringham Estate House, Gardens & Museum
- ✓ Broads Cruise from Wroxham
- ✓ Visit to Wroxham Barns





© www.visitnorthumberland.com

ALL ENTRANCES INCLUDED

Windsor Hotel, Whitley Bay

The largest and most impressive hotel in Whitley Bay, centrally located on South Parade, the Windsor is situated within sight of the sea on the scenic Northumbrian coast.

There is also a lovely dining room with a full English and continental breakfast available. Complimentary wireless internet access keeps you connected, and cable programming is available for your entertainment. Bathrooms have separate baths, showers and hairdryers. Tea and coffee making facilities. There is a lift that serves all floors.

Day 1 This morning we leave the local area and make our way to the Windsor Hotel, arriving in time for evening meal.

Day 2 Today we make our way to the medieval town of Alnwick, it is here where we visit Alnwick Castle and Gardens. The Castle is famously known to many as "Hogwarts" in the Harry Potter Movies (entrance included).



Day 3 After breakfast we take a drive along the scenic heritage coast line and cross the Holy Island of Lindisfarne, there will be some free time before our visit to Bamburgh Castle (entrance included).

Day 4 This morning we make our way to Cragside House, former home of the famous investor William Lord Armstrong (entrance included). We return to Whitley Bay where the rest of the day is at leisure.

Day 5 Sadly after breakfast we depart and make our way home.

PRICE INCLUDES

- ✓ All coach travel
- ✓ Half board accommodation in en-suite rooms
- ✓ Excursions



DATES & PRICES

DATES	DAYS	PRICE
1-5 Aug	5 days (Mon-Fri)	£464
Single Supplement £38		

Whitby



Royal Hotel

Overlooking Whitby Harbour, the Royal Hotel is situated in the West Cliffe area boasting a prime position and magnificent views including the breath-taking Whitby Abbey. The palace-like structure and excellent service of the hotel continues to amaze its guests. All 115 rooms offer comfortable and relaxing stay. Each has en suite facilities as well as a television, hairdryer, telephone and tea/coffee making facilities and free Wi-Fi is also available. The hotel has a grand ballroom, restaurant and bar areas providing plenty of room to relax and enjoy the sights. Historic Whitby is a great holiday destination offering the best of the British seaside and this hotel provides you with a perfect stay to enjoy it.

PRICE INCLUDES

- ✓ All coach travel
- ✓ Half board accommodation in en-suite rooms
- ✓ Excursion



DATES & PRICES

DATES	DAYS	PRICE
29 Apr-2 May	4 days (Fri-Mon)	£240
20-23 May	4 days (Fri-Mon)	£255
29 Jul-1 Aug	4 days (Fri-Mon)	£276
26-29 Aug <small>Bank Holiday</small>	4 days (Fri-Mon)	£285
21-24 Oct	4 days (Fri-Mon)	£225
4-7 Nov	4 days (Fri-Mon)	£201
Single Supplement £20 per person per night		

Harrogate



Cairn Hotel

The hotel boasts en-suite bedrooms, TV, hairdryer, direct dial telephones, tea/coffee making facilities, breakfast is a buffet and evening meal is a carvery. The hotel is just a 5 minute walk from Harrogate. A lift serves all floors.

PRICE INCLUDES

- ✓ All coach travel
- ✓ Half board accommodation in en-suite rooms
- ✓ All Inclusive (February)
- ✓ Excursion

February & Christmas Itinerary

Day 1 Depart local pick up point and make our way to Harrogate, calling off at Knaresborough for a lunch stop.

Day 2 After breakfast, we visit York to see what the city has to offer.

Day 3 Today excursion will visit Richmond & Ripon.

Day 4 Free day at leisure.

Day 5 After breakfast, sadly we depart and make our way home.

Weekend Itinerary

Day 1 Depart local pick up point and make our way to Harrogate, calling off at Knaresborough for a lunch stop.

Day 2 Free day at leisure.

Day 3 After breakfast more free time in Harrogate we then depart at 4pm to make our way home.

DATES & PRICES

DATES	DAYS	PRICE
14-18 Feb <small>All Inclusive</small>	5 days (Mon-Fri)	£264
20-22 May	3 days (Fri-Sun)	£179
21-23 Oct	3 days (Fri-Sun)	£163
CHRISTMAS & NEW YEAR BREAKS		
23-27 Dec	5 days (Fri-Tue)	£512
30 Dec-2 Jan	4 days (Fri-Mon)	£419
Single Supplement £16 (Feb, Christmas & New Year), £18 (May, Oct)		

Skegness



© Lincolnshire Tourism

Savoy Hotel

This family run hotel enjoys and excellent central location with all the seafront attractions and beach right on your doorstep.

The Savoy hotel boasts 46 bedrooms featuring full en-suite facilities. The beautiful seafront restaurant is the most outstanding attraction serving delicious menus using only the finest produce.

PRICE INCLUDES

- ✓ All coach travel
- ✓ Half board accommodation in en-suite rooms
- ✓ Entertainment and excursions



© Lincolnshire Tourism

DATES & PRICES

DATES	DAYS	PRICE
9-13 May	5 days (Mon-Fri)	£325
25 Jun-2 Jul	8 days (Sat-Sat)	£421
5-9 Sept	5 days (Mon-Fri)	£340
HOLLY & MISTLETOE BREAK		
7-11 Nov	5 days (Mon-Fri)	£310

Mystery Breaks



Mystery Hotel

Not sure where to go? Sit back relax and let us whisk you away. Our choice of Half Board Mystery Breaks are ideal to explore new places, meet new people and have a good time. All you have to do is simply book 'and we'll do the rest'.

Your hotel is situated in a prime position. All bedrooms have private facilities, TV's, tea/coffee making facilities and a lift that serves all floors.

PRICE INCLUDES

- ✓ All coach travel
- ✓ Half board accommodation in en-suite rooms
- ✓ 1 free lunch & 1 free drink in Feb
- ✓ 2 free lunches in Nov
- ✓ Excursions



DATES & PRICES

DATES	DAYS	PRICE
7-11 Feb	5 days (Mon-Fri)	£221
14-18 Nov	5 days (Mon-Fri)	£264
Single Supplements £Nil (Feb), £8 (Nov)		
Sea View Supplements £5 (Feb, Nov)		

Weekend & Themed Breaks

Longleat Festival of Light



© Flickr - Lee

Note: BB & Evening Meals

DoubleTree by Hilton Hotel, Swindon

All bedrooms are served by a lift and have private bathrooms, tea making facilities, TV and free wifi. There is an onsite restaurant.

Fri Depart local pick up point and we make our way to Bristol for a lunch stop before continuing to our hotel in time for evening meal.

Sat Each year the Longleat House is transformed into a magical array of lights. During the day you will visit the house and safari park with it's magnificent and varied collection of animals, and as night falls, watch the gardens and House become a magic place with walkways, trees and displays. The 2021 theme has not yet been decided.

Sun After breakfast we make our way home calling for a lunch stop.

DATES & PRICES

DATES	DAYS	PRICE
9-11 Dec	3 days (Fri-Sun)	£242
Single Supplement £44		

Edinburgh Tattoo



BB & 1 Evening Meal

King Robert Hotel, Stirling

The King Robert Hotel is situated on the site of the Battle of Bannockburn on the outskirts of historic Stirling. The King Robert is a family run hotel where you will always find a friendly welcome and excellent value for money.

Day 1 Travel to the hotel arriving in time for evening meal.

Day 2 Free time at the hotel until midday, followed by free time in Edinburgh before the Tattoo for the evening show (no evening meal).

Day 3 Sadly after breakfast, we return home.

NB This Tour is not suitable if you have difficulty in walking.

DATES & PRICES

DATES	DAYS	PRICE
24-26 Aug	3 days (Wed-Fri)	£311
Single Supplement £35.50 Deposit required for this tour is £90 per person		

Liverpool Weekends



Bed & Breakfast

Liverpool Atlantic Towers

All rooms are en-suite, with TV, hairdryer and complimentary Wi-Fi. The hotel also has a terrace offering skyline views of Liverpool and a restaurant serving a range of cuisines as well as a lift serving all floors.

Sat Travel to Liverpool for you to explore this amazing city.

Sun Morning to explore Liverpool before leaving at 4pm.

DATES & PRICES

DATES	DAYS	PRICE
19-20 Nov	2 days (Sat-Sun)	£115
Single Supplement £18		

Chester Weekend



BB & Evening Meals

Queens Hallmark Hotel

The Queens Hallmark Hotel is centrally located, just a short walk from the centre of Chester and is one of the oldest hotels in the UK. All en-suite bedrooms are comfortably furnished with tea/coffee making facilities, Wi-Fi, there are a few ground floor rooms, a lift serves all floors.

Sat Depart local pick up point and we make our way to Chester.

Sun Sadly we depart at 4pm to return home.

DATES & PRICES

DATES	DAYS	PRICE
19-20 Mar	2 days (Sat-Sun)	£124
19-20 Nov	2 days (Sat-Sun)	£132
Single Supplement £28 (March), £29 (November)		

Weekend & Themed Breaks

Harrogate Weekends



BB & Evening Meals

Cairn Hotel

The Hotel boasts en-suite bedroom, TV, hairdryer, tea/coffee making facilities, The Hotel is just a 5 minute walk from Harrogate.

Fri Travel to Knaresborough for a lunch stop before heading to the hotel.

Sat Day at leisure in Harrogate.

Sun Morning to explore Harrogate, leaving at 4pm.

DATES & PRICES

DATES	DAYS	PRICE
20-22 May	3 days (Fri-Sun)	£179
21-23 Oct	3 days (Fri-Sun)	£163
Single Supplement £18 per night		

Thursford Christmas Spectacular



BB & Evening Meals

The Brook Hotel

The Brook Hotel is a modern building with a beautiful courtyard in the centre. This three star hotel is on the outskirts of Norwich. All bedrooms are fully en-suite with tea/coffee making facilities, hairdryer, TV's and Wi-Fi.

Thur Travel directly to the hotel.

Fri After breakfast, we make our way to Thursford for the matinee performance.

Sat Leave after breakfast calling at Springfields before making our way home.

DATES & PRICES

DATES	DAYS	PRICE
24-26 Nov	3 days (Thur-Sat)	£264

Harry Potter Studios



BB & Evening Meal

Crowne Plaza London - Heathrow, West Drayton

A convenient Heathrow Airport hotel, just off the M4, with an indoor pool. The welcoming bedrooms are designed with comfort in mind. Wi-Fi is available in both the public areas and guest rooms. Enjoy either Indian cuisine in Eriki Restaurant or modern British dishes in Orwell's Brasserie, and relax with a pint in Dr. O'Driscoll's Irish Bar.

Day 1 Travel to the Hotel where you will be served an evening meal.

Day 2 After breakfast, visit the Harry Potter studios, departing at 3pm for home.

DATES & PRICES

DATES	DAYS	PRICE
7-8 May	2 days (Sat-Sun)	£184
12-13 Aug	2 days (Fri-Sat)	£184
Single Supplement £30.50 (May), £27 (August)		
August date staying at the Holiday Inn, London Heathrow		

Winchester Christmas Market



BB & Evening Meal

Hampshire Court Hotel, Basingstoke

This 4 star hotel is well situated for our trip to the Winchester Market and also provides a luxury and quality stay. Contemporary, spacious and very comfortable, all rooms are en-suite, with TV and Wi-Fi access. Although the hotel doesn't have any ground floor rooms, a lift serves the first floor where all bedrooms are located.

Fri Travel directly to hotel with comfort stops en route

Sat Free day to explore Winchester.

Sun After breakfast we make our way home.

Pending Christmas Markets taking place in this period

DATES & PRICES

DATES	DAYS	PRICE
18-20 Nov	3 days (Fri-Sun)	£209
Single Supplement £50		

Weekend & Themed Breaks

Whitby Long Weekends



BB & Evening Meals

Royal Hotel

The Royal Hotel is situated on the West Cliffe a prime position and magnificent views. All rooms are en-suite with a TV, and tea and coffee making facilities.

DATES & PRICES

DATES	DAYS	PRICE
29 Apr-2 May	4 days (Fri-Mon)	£240
20-23 May	4 days (Fri-Mon)	£255
29 Jul-1 Aug	4 days (Fri-Mon)	£276
26-29 Aug Bank Holiday	4 days (Fri-Mon)	£285
21-24 Oct	4 days (Fri-Mon)	£225
4-7 Nov	4 days (Fri-Mon)	£201

Single Supplement £20 per person per night

Legoland Weekend



BB & Evening Meals

Holiday Inn - Heathrow (M4 J4)

With its unusual circular form, the Holiday Inn Heathrow is situated right next to the airport. Each room has free Wi-Fi, a direct-dial telephone, as well as tea/coffee making facilities and a satellite TV. Enjoy a bite to eat at the Junction restaurant, featuring contemporary British cooking with modern regional dishes.

Fri Travel direct to Legoland - Free time until 6pm then onto Hotel for evening meal.

Sat Legoland full day - depart 4pm.

DATES & PRICES

DATES	DAYS	PRICE
12-13 Aug	2 days (Fri-Sat)	£183
Child (3-12yrs)		£118

Single Supplement £27

London Weekend



Bed & Breakfast

The Tower Hotel

The Tower Hotel is situated near the River Thames, All rooms are en-suite, with tea/coffee making facilities & TV.

Sat Depart local pick up points and we make our way to London.

Sun Today after breakfast we will leave the hotel at 10am and park up on Park Lane. We will depart from Park Lane at 4pm and make our way back home. We should be home between 8pm and 9pm.

DATES & PRICES

DATES	DAYS	PRICE
13-14 Aug	2 days (Sat-Sun)	£149
5-6 Nov	2 days (Sat-Sun)	£155

Single Supplements £74 (Aug), £79 (Sept)

Scarborough Overnights



BB & Evening Meals

Cumberland Hotel

The Cumberland Hotel is situated on South Cliff and near to town centre. All bedrooms have en-suite, TV and tea/coffee making facilities.

Sat Depart local pick up points and we make our way to Scarborough.

Sun Free time in Scarborough before departing at 4pm to make our way home with comfort stops en-route.

DATES & PRICES

DATES	DAYS	PRICE
19-20 Mar	2 days (Sat-Sun)	£95
16-17 Apr	2 days (Sat-Sun)	£102

Single Supplements £Nil (Mar, Apr)
Garden View Supplements (per person per night) £5 (Mar, Apr)

Pontins Pakefield & Sand Bay (Adults only)



Pontins Pakefield

Pontins Pakefield is set in a picturesque seaside spot with beautiful gardens and has some of the most beautiful and relaxing views around, with beautifully kept gardens, restaurants, bars and cafes, you also have entertainment shows from the latest artists and our famous Bluecoat Shows and Cabarets.

Whilst staying at Pakefield, all accommodation will have a shower fitted over the bath, is spacious and comfortable, with TV's and tea/coffee making facilities.

DATES & PRICES

DATES	DAYS	PRICE
1-5 Aug	5 days (Mon-Fri)	£235
22-26 Aug	5 days (Mon-Fri)	£235

PRICE INCLUDES

- ✓ All coach travel
- ✓ Half board accommodation in en-suite rooms
- ✓ Entertainment
- ✓ Pakefield - 1 full day excursion to Great Yarmouth
- ✓ Sand Bay - 1 full day excursion to Weston-Super-Mare

Pontins Sand Bay (Adults only)

Pontins Sand Bay is for adults only. Sand Bay is a strip of coast in North Somerset bordered to the south by Worlebury Hill and to the north by Middle Hope and Sand Point. It lies 2 miles north of the seaside resort of Weston-super-Mare, and across the Bristol Channel from South Wales and adjacent to the village of Kewstoke.

Set in a beautiful open landscape the grounds of the park are landscaped with plenty of green grass to stroll on and relaxing seating areas.

The guest rooms offer en suite facilities featuring a bath or shower. There are brand new LCD TVs with a wide choice of 'Freeview' channels and tea and coffee making facilities.

DATES & PRICES

DATES	DAYS	PRICE
20-24 Jun 60s tribute	5 days (Mon-Fri)	£235
25-29 Jul 60s tribute	5 days (Mon-Fri)	£247
19-23 Sept Variety Entertainment	5 days (Mon-Fri)	£223

Blackpool



© Flickr - 70023venus

Park House Hotel

Blackpool Promotions Group own the Park House Hotel. They have invested, improved and built the Park House into the fine hospitality experience it is today. The Hotel has an excellent position on Blackpool's prestigious North Promenade and is within walking distance to the town centre and all major attractions.

All of our en-suite bedrooms are comfortable and well maintained, each with colour televisions, radio and tea/coffee making facilities. Two passenger lifts servicing all floors. Entertainment each evening in either our Bar lounge or our elegantly decorated Ballroom caters for all tastes.

PRICE INCLUDES

- ✓ All coach travel
- ✓ Half board accommodation in en-suite rooms
- ✓ Entertainment
- ✓ Excursions



DATES & PRICES

DATES	DAYS	PRICE
6-10 Jun	5 days (Mon-Fri)	£345
18-22 Jul	5 days (Mon-Fri)	£345
5-9 Sept	5 days (Mon-Fri)	£345
28-31 Oct	4 days (Fri-Mon)	£298

Blackpool



**HALF PRICE BAR
Feb-Mar**

Queens Hotel

Part of the Leisureplex Group. The Queens Hotel is ideally situated on Blackpool's South Promenade between the South and Central Piers, with the Pleasure Beach and Sandcastle Water Park less than a 10 minute walk away.

A lift serves most of the bedrooms, but a few do have additional stairs, with en-suite rooms. There are no ground floor rooms in the hotel. The hotel offers some sea view rooms, tea/coffee making facilities, hairdryer, TV's and Wi-Fi in public areas. The hotel features a theatre bar with entertainment most evenings, games room and sun lounge facing the sea. There is a non smoking policy throughout the hotel.

Please Note: On 3 day breaks pick up point are Barnsley Bus Station, Sheffield £5/£6 Stand, Chesterfield Coach Station.

PRICE INCLUDES

- ✓ All coach travel
- ✓ Half board accommodation in en-suite rooms
- ✓ Entertainment
- ✓ 1 free lunch in Feb/Mar/Oct
- ✓ 2 free lunches in Nov
- ✓ Half price bar 7-11pm in Feb/Mar
- ✓ Excursions

DATES & PRICES

DATES	DAYS	PRICE
14-18 Feb	5 days (Mon-Fri)	£212
25-27 Mar	3 days (Fri-Sun)	£140
11-15 Jun	5 days (Sat-Wed)	£278
24-28 Aug	5 days (Wed-Sun)	£308
16-19 Sept	4 days (Fri-Mon)	£262
3-7 Oct	5 days (Mon-Fri)	£340

TURKEY & TINSEL BREAK

7-11 Nov	5 days (Mon-Fri)	£269
Single Supplements (pppn) £Nil (Feb, Mar), £11 (Jun, Aug, Sept), £8 (Oct, Nov)		
Sea View Supplements (pppn) £5 (Feb, Mar, Oct, Nov), £8 (Jun, Aug)		

Blackpool



NEW FOR 2022

Ruskin Hotel

Ideally situated in Blackpool Town Centre on Albert Road, close to Winter Gardens, Blackpool Tower & Ballroom and only a 2 minutes from the famous Golden Mile. The 3 STAR Ruskin Hotel is very modern with all rooms en-suite, TV, complimentary tea tray, telephone and hairdryer. The dining room serves good homecooked food, and entertainment is provided every night, and there is a well stocked bar. A lift serves all floors.

PRICE INCLUDES

- ✓ All coach travel
- ✓ Half board accommodation in en-suite rooms
- ✓ Entertainment and excursions



DATES & PRICES

DATES	DAYS	PRICE
EARLY BIRD SPECIAL THEME BREAKS		
10-14 Jan 60's Week (No Taxis)	5 days (Mon-Fri)	£180
17-21 Jan Soul & Motown (No Taxis)	5 days (Mon-Fri)	£180
24-28 Jan UK Tour (No Taxis)	5 days (Mon-Fri)	£180
28 Mar-1 Apr 60's Week	5 days (Mon-Fri)	£265
2-6 May	5 days (Mon-Fri)	£301
20-24 Jun	5 days (Mon-Fri)	£301
11-15 Jul	5 days (Mon-Fri)	£322
29 Aug-2 Sept	5 days (Mon-Fri)	£322
ILLUMINATION BREAK/TURKEY TINSEL BREAK		
31 Oct-4 Nov	5 days (Mon-Fri)	£288
TURKEY & TINSEL BREAK		
21-25 Nov	5 days (Mon-Fri)	£288
9-12 Dec	4 days (Fri-Mon)	£244
CHRISTMAS BREAK		
23-27 Dec	5 days (Fri-Tue)	£429

St Annes



The Monterey Beach Hotel

The family owned Monterey Beach Hotel is situated on the sea front of the North Promenade, St. Anne's just a short stroll from the town centre and beach front facilities.

PRICE INCLUDES

- ✓ All coach travel
- ✓ Half board accommodation in en-suite rooms
- ✓ Entertainment and excursions

Seven of the bedrooms are on the ground floor while a lift serves the floors to the rest of the bedrooms. There are several single rooms available. All rooms have en-suite with TV, tea/coffee making facilities and some have sea views. The head chef offers an excellent selection of traditional dishes which are all freshly produced and served in the spacious dining room. There is a well stocked wine cellar to compliment the catering including spirits and liqueurs. Entertainment is available in the Oceans II Banqueting Suite on selected evenings.

DATES & PRICES

DATES	DAYS	PRICE
7-11 Mar	5 days (Mon-Fri)	£232
18-22 Apr Easter	5 days (Mon-Fri)	£240
16-20 May	5 days (Mon-Fri)	£252
20-24 Jun	5 days (Mon-Fri)	£260
25-29 Jul	5 days (Mon-Fri)	£264
19-23 Sept	5 days (Mon-Fri)	£272
10-14 Oct	5 days (Mon-Fri)	£252
TURKEY & TINSEL BREAKS		
14-18 Nov	5 days (Mon-Fri)	£250
CHRISTMAS & NEW YEAR BREAKS		
23-27 Dec	5 days (Fri-Tue)	£418
30 Dec-2 Jan	4 days (Fri-Mon)	£358

Sea Views £15 per night per room Double/Twins only

Morecambe



NEW FOR 2022

Auckland Hotel

With 40 years of experience in the hotel industry, this family run hotel and owners will provide everything you need for a relaxing break away. It is perfectly situated to cater for everything you want from a Great British holiday, located just 3 miles from the historic town of Lancaster and a short distance from the Lake District, renowned for its beautiful scenery, with the promenade on the doorstep of the hotel and the beach just a few footsteps away.

This hotel offers a range of facilities such as a lift for access to first and second floors but some rooms may incur steps, sun lounges and patio with sea views, all 54 bedrooms are beautifully decorated, en-suite with tea/coffee making facilities, flat screen TVs and optional sea views. There is also free Wi-Fi access throughout the hotel.

PRICE INCLUDES

- ✓ All coach travel
- ✓ Half board accommodation in en-suite rooms
- ✓ Excursions and entertainment



DATES & PRICES

DATES	DAYS	PRICE
20-24 Jun	5 days (Mon-Fri)	£316
MISTLETOE & WINE BREAK		
5-9 Dec	5 days (Mon-Fri)	£310

Grange Over Sands



ALL INCLUSIVE

Cumbria Grand Hotel

The peaceful, rural and spacious grounds of Cumbria Grand Hotel extend to 20 acres and include a woodland nature walk if you have the energy, and are also the perfect place in which to relax after a days sightseeing. However if you are feeling even more energetic, there is also an outdoor tennis court, putting green and children's play area and a full size snooker table.

PRICE INCLUDES

- ✓ All coach travel
- ✓ Full board or all inclusive accommodation in en-suite rooms
- ✓ Entertainment and excursions
- ✓ 3 complimentary drinks vouchers per day
- ✓ 2 packed lunches
- ✓ 2 in-house lunches

All bedrooms are en-suite with colour TV, radio, telephone, central heating, tea and coffee making facilities and most have views over the bay or woodland. Live entertainment is available on some evenings and there is a well stocked bar. The restaurant is renowned for its excellent kitchen and there is a lift.



DATES & PRICES

DATES	DAYS	PRICE
28 Mar-1 Apr All Inclusive	5 days (Mon-Fri)	£276
13-17 Oct All Inclusive	5 days (Thur-Mon)	£380
Single Supplement £16 per person per night		

Liverpool



©VisitBritain - Pawel Libera

NEW FOR 2022

Adelphi Hotel

The Adelphi Hotel, which is owned by the Britannia Group, is a stunning Grade II listed Edwardian style building, which was originally opened in 1862. It is positioned in the centre of Liverpool with some of the country's best shopping on its doorstep.

The en-suite bedrooms are equipped with tea and coffee making facilities, TV and hairdryer. Free Wi-Fi is available in the public areas. The hotel has many facilities for guests to enjoy including two restaurants and three different bars.

PRICE INCLUDES

- ✓ All coach travel
- ✓ Half board accommodation in en-suite rooms
- ✓ Entertainment and excursions



DATES & PRICES

DATES	DAYS	PRICE
11-15 Jul	5 days (Mon-Fri)	£303
PLEASE NOTE this date is subject to football events		

Southport



Talbot Hotel

A warm welcome awaits you at The Talbot Hotel. The Hotel is close to the famous Lord Street and Town Centre. There are 24 well appointed bedrooms which are en-suite (apart from 4 which are not) and are offered on a first come first served basis, have TV, hairdryer, tea/coffee making facilities.

The restaurant prides itself on excellent food to suit all tastes and afterwards you can relax in the warm, intimate atmosphere of the well stocked bar. Unfortunately there is no lift in the Hotel.

PRICE INCLUDES

- ✓ All coach travel
- ✓ Half board accommodation in en-suite rooms
- ✓ Entertainment and excursions

DATES & PRICES

DATES	DAYS	PRICE
17-21 Jan	5 days (Mon-Fri)	£155
14-18 Feb	5 days (Mon-Fri)	£165
14-18 Mar	5 days (Mon-Fri)	£185
3-7 Apr	5 days (Sun-Thur)	£215
2-6 May	5 days (Mon-Fri)	£215
12-17 Jun	6 days (Sun-Fri)	£240
10-15 Jul	6 days (Sun-Fri)	£240
7-12 Aug	6 days (Sun-Fri)	£240
4-9 Sept	6 days (Sun-Fri)	£230
3-7 Oct	5 days (Mon-Fri)	£210

TURKEY & TINSEL BREAKS

21-25 Nov	5 days (Mon-Fri)	£220
-----------	------------------	------

NEW YEAR BREAKS

30 Dec-2 Jan	4 days (Fri-Mon)	£330
Single Supplement £25		

Bridlington



The Monarch Hotel

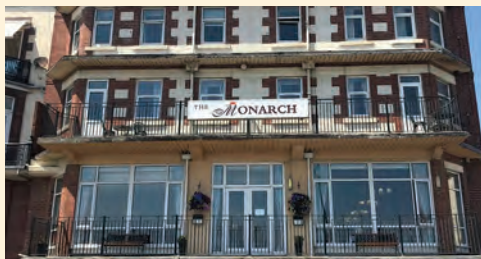
The Monarch Hotel is part of the Leisureplex Group, it is situated in a prime position on Bridlington's seafront.

The resorts flat promenade offers a relaxing stroll into the town. Packed with attractive antique shops and restaurants.

All bedrooms are en-suite bath or showers, TV, tea/coffee making facilities, free Wi-Fi. A lift serves all floors except the 6th floor.

PRICE INCLUDES

- ✓ All coach travel
- ✓ Half board accommodation in en-suite rooms
- ✓ 1 free lunch Nov
- ✓ 2 free lunches Dec
- ✓ Entertainment and Excursions



DATES & PRICES

DATES	DAYS	PRICE
15-18 Apr ^{Easter}	4 days (Fri-Mon)	£220
30 Apr-4 May	5 days (Sat-Wed)	£280
14-18 May	5 days (Sat-Wed)	£308
28-31 Oct	4 days (Fri-Mon)	£224

TURKEY & TINSEL BREAK

11-13 Nov	3 days (Fri-Sun)	£172
12-16 Dec	5 days (Mon-Fri)	£269

Single Supplements (pppn)
 £Nil (Apr), £11 (May), £8 (Oct, Nov, Dec)
 Sea View Supplements (pppn)
 £5 (Apr), £8 (May), £5 (Oct, Nov, Dec)

Scarborough



**Winter Warmer
HAPPY HOUR
3-4pm/9-10pm**

Delmont Hotel

The Delmont Hotel in Scarborough, with its panoramic sea views across the North Bay provides a great base from which to explore breathtaking beaches and a whole host of local attractions.

A family run hotel with helpful staff all bedrooms are en-suite, with tea/coffee making facilities, TV's and radio/alarms. The Delmont Hotel has a bar lounge which offers a variety of drinks and bar snacks, whilst the dining room serves exquisite cuisine with a varied menu, this room doubles into your evening entertainment. There is a lift at this hotel.



PRICE INCLUDES

- ✓ All coach travel
- ✓ Half board accommodation in en-suite rooms
- ✓ Winter Warmer Mar & Nov only
- ✓ Entertainment and excursions

DATES & PRICES

DATES	DAYS	PRICE
21-25 Mar ^{Winter Warmer}	5 days (Mon-Fri)	£230
30 May-3 Jun	5 days (Mon-Fri)	£269
4-8 Jul	5 days (Mon-Fri)	£275
29 Aug-2 Sept	5 days (Mon-Fri)	£284

TURKEY & TINSEL BREAK

7-11 Nov ^{Happy Hour}	5 days (Mon-Fri)	£252
--------------------------------	------------------	------

Scarborough



© Flickr - Orangeaurochs

The Cumberland Hotel

Part of the Leisureplex Group. The Cumberland Hotel is situated on the beautiful South Cliff and is literally minutes away from the beach, Spa Complex and town centre.

A passenger lift serves all 125 bedrooms offering ensuite facilities, TV and tea/coffee making facilities. There is entertainment every night with music for dancing, cabaret, bingo and quiz nights.



PRICE INCLUDES

- ✓ All coach travel
- ✓ Half board accommodation in en-suite rooms
- ✓ 1 free lunch Apr (not Easter)/Oct
- ✓ 2 free lunches Dec
- ✓ Entertainment and excursions

DATES & PRICES

DATES	DAYS	PRICE
19-20 Mar	2 days (Sat-Sun)	£95
16-17 Apr ^{Easter}	2 days (Sat-Sun)	£102
25-29 Apr	5 days (Mon-Fri)	£280
16-20 May	5 days (Mon-Fri)	£308
31 Aug-4 Sept	5 days (Wed-Sun)	£312
24-28 Oct	5 days (Mon-Fri)	£272

TURKEY & TINSEL BREAK

5-9 Dec	5 days (Mon-Fri)	£279
---------	------------------	------

Single Supplements (pppn)
 £Nil (Mar, Apr), £11 (May, Aug), £8 (Oct, Dec)
 Garden View Supplements (pppn)
 £5 (Mar, Apr, Oct, Dec), £8 (May, Aug)

Isle of Man



Chesterhouse Hotel

The Chesterhouse Hotel is located on the sea front in Douglas with spectacular views over the Irish Sea. All bedrooms are en-suite with showers, TV and tea/coffee making facilities.

Additional facilities include a restaurant with panoramic views overlooking Douglas Bay and lower ground floor bar. Please note that due to the original architecture features of the hotel it is not suitable for any guests requiring wheelchair or street level access as the hotel has external steps to access the hotel entrance. There is a lift to all floors with steps to some bedrooms.

Day 1 We make our way to Heysham for the afternoon ferry to Douglas.

Day 2 Morning excursion across the scenic centre of the island and the sleepy town of Peel. It is home of the Manx smoked kippers.



Day 3 After breakfast we take the TT race route for a trip to Ramsey. We then make our way to the Manx electric railway for an intricate journey to Laxey. Later we transfer to the Snaefell Mountain railway for a ride up to the islands summit, from where you may be rewarded with views on the Seven Kingdom.

Day 4 Today we visit Port Erin. Enjoy a visit to Cregneash Folk Village (admission not included).

Day 5 Sadly we return home.

Please note: Photographic ID is required for this tour.

PRICE INCLUDES

- ✓ Coach travel
- ✓ Half board accommodation in en-suite rooms
- ✓ Return ferry
- ✓ Travel pass for 1 day on the railway
- ✓ Entertainment



DATES & PRICES

DATES	DAYS	PRICE
24-28 Jun	5 days (Fri-Tue)	£482
Single Supplement £60		



Leapark Hotel, Grangemouth

The Leapark Hotel is located in a remarkably central Scottish leisure destination in the very Heart of Central Scotland. There are 48 well appointed rooms which include 9 ground floor rooms in the apartment and stable block. All bedrooms are en-suite with television, radio, direct-dial telephone and tea/coffee making facilities. Unfortunately, there is no lift in the hotel.



Day 1 We depart early morning and head north with comfort stops to reach the hotel mid afternoon.

Day 2 After breakfast we travel to Edinburgh to enjoy a visit on The Royal Yacht Britannia. Once the Queen's floating royal residence. The afternoon will be spent with free time in Edinburgh.

Day 3 Today we take a short drive to Falkirk Wheel one of Scotland's top

attractions, time here will involve a trip on the boat to experience the only rotating boat lift in the world, joining the Union Canal. In the afternoon we visit the magnificent 30 metre high Keipies 300 tonnes horse head sculptures created by Glasgow Artist Andy Scott. Then after evening meal we re-board the coach and revisit the Keipies and see this attraction illuminated looking at its best.

Day 4 After breakfast we travel to Queens Ferry for the cruise under the 3 famous Forth Bridges.

Day 5 Sadly we depart after breakfast and make our way home.



PRICE INCLUDES

- ✓ All coach travel
- ✓ Half board accommodation in en-suite rooms
- ✓ Excursions including all entrances



DATES & PRICES

DATES	DAYS	PRICE
11-15 Jun	5 days (Sat-Wed)	£398
10-14 Sept	5 days (Sat-Wed)	£406
Single Supplement from £20 per night		

Great Highlands Railway



Highlander Hotel, Newtonmore

Based right in the centre of the Highlands of Scotland, the Highlander Hotel is surrounded by the majestic beauty of the area.

There is a public area with a comfortable lounge, bar, restaurant and gift shop. Bedrooms are situated in a quiet area and all of which are en-suite with hairdryer, TV and tea/coffee making facilities. Unfortunately the hotel does not have a lift but have some ground floor rooms.

Day 1 A morning departure, stopping for lunch en route. Travel for 4 nights accommodation at the Highlander Hotel, Newtonmore.

Day 2 After breakfast we travel to Fort William where we join the west highland line to Mallaig used in a Harry Potter film, including crossing the Glenfinnan viaduct and travelling along the shoreline of Loch Eil where you will have free time in Mallaig for lunch then back to Fort William.



Day 3 After breakfast we depart for Inverness where we board the Kyle line train, featured in Michael Palin's "Great Railway Journeys Of The World". This line offers us scenic splendours as we meander through Strath Bran and Glen Carron, before following the twisting shoreline of Loch Carron to the Kyle of Lochalsh, we rejoin the coach and take a journey onto Isle of Skye then make a stop of at Ella Donan Castle, then make our way back to the Hotel.

Day 4 After breakfast we depart for the Cairngorms and board the Cairngorm Mountain Railway.

Day 5 We depart for home.

Please note: The train journey on the Inverness to Kyle of Lochalsh is Diesel.

PRICE INCLUDES

- ✓ All coach travel
- ✓ Half board accommodation in en-suite rooms
- ✓ Entertainment and excursions



DATES & PRICES

DATES	DAYS	PRICE
18-22 Jul	5 days (Mon-Fri)	£502
Single Supplement £86		



**GIN &
GINGERBREAD
in December**

**ALL INCLUSIVE
in March**

Salutation Hotel

The Hotel is situated in the heart of the historic City of Perth and the Gateway to the Highlands, the welcome is warm, offering traditional hospitality with all modern comforts.

The Salutation has 84 bedrooms all with en-suite bathrooms, also they have excellent facilities which includes Wi-Fi, TVs, hairdryer, tea/coffee making facilities. The hotel also has a lift.

Day 1 Arrive at the hotel in the centre of Perth in plenty of time to explore the hotel before evening meal.

Day 2 After a hearty Scottish breakfast you will depart the hotel and travel to Scotland's most famous city Edinburgh, with plenty of time to explore the landmarks or browse the many shops and cafes this historic city has to offer.

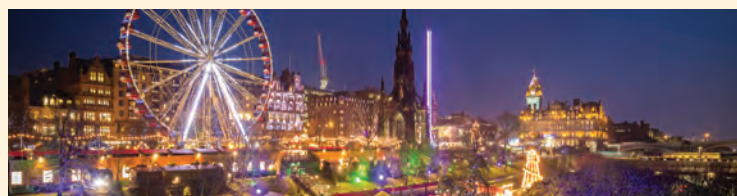
Day 3 Full day excursion to discover the Royal Burgh of St Andrews with plenty of time to discover the medieval centre, castle and shop before we transport you back to the hotel via the Fife fishing villages of Crail, Anstruther and Pittenweem.

Day 4 Free day to explore the city of Perth with mid day lunch served in the hotel.

Day 5 After a hearty breakfast we depart for home.

PRICE INCLUDES

- ✓ All coach travel
- ✓ Half board / all inclusive accommodation in en-suite rooms
- ✓ Entertainment and excursions
- ✓ 3 complimentary drinks, 2 packed lunches & 2 in-house lunches (March only)
- ✓ Mini afternoon tea with gingerbread and glass of festive gin cocktail (Nov only)



DATES & PRICES

DATES	DAYS	PRICE
7-11 Mar All Inclusive	5 days (Mon-Fri)	£296
12-16 Dec Gin & Gingerbread	5 days (Mon-Fri)	£274
Single Supplement £64		

Dunoon



Argyll Hotel, Dunoon

The Argyll Hotel, which is part of the SGE Hotel Group, is located in the heart of Dunoon with stunning panoramic sea views.

The historic town of Dunoon is situated on the scenic Cowal Peninsula and shows many reminders of its legacy as a Victorian resort, most notably in its attractive pier and promenade.

The 33 well-appointed bedrooms have flat screen HD TVs, telephone, coffee and tea making facilities and a hairdryer. Walk in showers are available. The hotel does have a lift and is a non-smoking hotel. Free Wi-Fi is available.



PRICE INCLUDES

- ✓ All coach travel
- ✓ Half board accommodation in en-suite rooms
- ✓ Entertainment and excursions



DATES & PRICES

DATES	DAYS	PRICE
27 Jun-1 Jul	5 days (Mon-Fri)	£346
26-30 Sept	5 days (Mon-Fri)	£346
Single Supplement £10 per person per night		

Arrochar Under Loch and Quay



Arrochar Hotel

The Arrochar Hotel is set in former coaching inn at the foot of the Arrochar Alps and on the Banks of Loch Long this hotel boasts impressive views of the Scottish Highlands.

All bedrooms are elegantly decorated with en-suite, TV, hairdryer, radio and tea/coffee facilities. There is a lift to all floors.

Day 1 This morning we leave the local area and make out way to Arrochar in time for dinner.

Day 2 This morning we visit Loch Lomond for a cruise at the Northern Fjord end sails over the deepest part of the Loch, past the Aritiet Waterfalls and around Honeymoon Island (boat trip included). After the cruise we visit Loch Fyne and Inverary.

Day 3 Today we board the train from Crianlarich to Oban. Then travel to Inverary for a visit to Inverary Jail and Courthouse, now a living museum where real people portray life in a 19th Century prison.

Day 4 This morning we visit the city of Glasgow. There is so much to see and do, stylish shops, cultural treasures and rich history and heritages.

Day 5 Sadly today we make out way home.

DATES & PRICES

DATES	DAYS	PRICE
5-9 Sept	5 days (Mon-Fri)	£482
Single Supplement £68		

PRICE INCLUDES

- ✓ All coach travel
- ✓ Cruise on Loch Lomond
- ✓ Admission to Inverary Jail and Court House
- ✓ Single rail journey from Crianlarich to Oban
- ✓ Porterage in hotel
- ✓ Tea/coffee on arrival
- ✓ 1 night entertainment



Aberfoyle



NEW FOR 2022

Rob Roy Hotel

Named after the local legendary folk hero Rob Roy McGregor. The Rob Roy Hotel is situated in idyllic countryside, set within Scotlands first National Park and is a short stroll along the banks of the Forth River into Aberfoyle. All bedrooms have tea/coffee making facilities, en-suite bathrooms (mostly showers) and colour TV. There is a lift serving the first floor although the majority of bedrooms are situated on the ground floor. The Rob Roy Suite is a ballroom with a large dance floor and the Tartan Room is on a smaller scale, both provide regular entertainment.

(Please note this hotel is pet friendly)

PRICE INCLUDES

- ✓ All coach travel
- ✓ Half board accommodation in en-suite rooms
- ✓ Entertainment and excursions



DATES & PRICES

DATES	DAYS	PRICE
14-18 Mar	5 days (Mon-Fri)	£251
16-20 May	5 days (Mon-Fri)	£279
11-15 Jul	5 days (Mon-Fri)	£291
12-16 Sept	5 days (Mon-Fri)	£283
17-21 Oct	5 days (Mon-Fri)	£267



**ALL INCLUSIVE
in Apr & Nov**

Palace Spa Hotel

Situated right in the heart of Inverness city centre, the Best Western Palace sits on the banks of the River Ness, directly opposite Inverness Castle.

Shops, entertainment and nightlife are just a few minutes away. The hotel was built in the 1890's as a splendid house and many upgrades have taken place whilst striving to keep the original grandeur of the building. In total there are 88 en-suite bedrooms with extra comfortable beds and 5 star leisure club has been completely re-furnished and is available free to all guests. The hotel also has a passenger lift.

The all inclusive deal at this hotel includes:

- Free bar after dinner between 7pm-10pm every night. Choose from a selection of beers, spirits, wines and soft drinks every night. No need to put your hand in your pocket for drinks.



- Lunch each day. No need to come back to the hotel if you're away for the day, as we'll give you a packed lunch.

- Wine with dinner. You'll be served with a refillable glass of specially selected red or white wine each evening with dinner.

- Cocktail reception. A welcome cocktail from the Manager on arrival.

- Morning or afternoon tea. Choose each day to have morning or afternoon tea and shortbread, whatever fits in with your plans for the day,

- A full Scottish buffet breakfast. At least 54 items to choose from including haggis.

- 3 course dinner. 4 choices on each course each night.

- Tea & coffee. Any time of the day, just like home.

*Please see page 4 regarding All Inclusive Package in Scotland.

PRICE INCLUDES

- ✓ All coach travel
- ✓ All inclusive accommodation in en-suite rooms
- ✓ Entertainment and excursions

DATES & PRICES

DATES	DAYS	PRICE
3-7 Apr <i>All Inclusive</i>	5 days (Sun-Thur)	£410
TURKEY & TINSEL BREAK		
6-10 Nov <i>All Inclusive</i>	5 days (Sun-Thur)	£410
Single Supplements £90 (April, November)		

Carrickfergus, Belfast



Loughshore Hotel

The Belfast Loughshore Hotel is located in Carrickfergus on the Antrim Coast, just 15 minutes from Belfast city. It is ideally situated as a base for visiting the Giant's Causeway and Bushmills. There is lift access to the 68 bedrooms, all with hairdryer, TV and tea/coffee making facilities. There is a welcoming bar/lobby area with comfortable seating as well as a mezzanine lounge. The restaurant is inviting, cosy and offers a relaxing ambience.

Day 1 Depart local pickup points and make our way to Holyhead for the ferry across to Dublin. Then continue to our hotel in Belfast and enjoy our welcome tea/coffee while our luggage is taken to our rooms.

Day 2 Today we travel to Belfast where our guide joins us for a half day step on guided tour of this fascinating city. We will then visit the Titanic Experience, the worlds largest Titanic exhibition. In the afternoon, we enjoy free time to explore the shops, bars and restaurants that this wonderful city has to offer.

Day 3 This morning, we will travel to the historic Antrim Castle Gardens. In the afternoon, we head south to visit the National Trust's Mount Stewart House & Gardens (open all year). The garden reflects a rich tapestry of design and great planting artistry that was the hallmark of Edith, Lady Londonderry.

Day 4 Today we travel along the stunning Antrim Coast before arriving at the village of Bushmills where we visit the Old Bushmills Distillery, the oldest whiskey producer in Ireland. Here we enjoy an informative guided tour showing the processes used to manufacture the whiskey. In the afternoon, we visit the extraordinary Giant's Causeway, the only UNESCO World Heritage Site in Northern



PRICE INCLUDES

- ✓ All coach travel
- ✓ Half board accommodation in en-suite rooms
- ✓ Excursions
- ✓ All Entrances

Ireland. Flanked by the wild North Atlantic Ocean on one side and a landscape of the dramatic cliffs on the other, for centuries the Giant's Causeway has inspired artists, stirred scientific debate and captured the imagination of all who see it and there is now a shuttle bus available for the less mobile to gain access to the stones.

Day 5 Free day in Belfast to explore.

Day 6 After breakfast, we leave our hotel and begin our journey from Dublin to Holyhead to arrive home late evening.

Please note: Photographic ID is required for this tour (passport, driving licence or bus pass).

Also required for this tour:

- Insurance

DATES & PRICES

DATES	DAYS	PRICE
15-20 Aug	6 days (Mon-Sat)	£599

Summertime in Ireland, Killarney



Killarney Towers Hotel

The four-star hotel is located in the heart of Killarney Town, County Kerry, the Killarney Towers Hotel & Leisure Centre is a luxurious four-star accommodation that offers guests an extensive array of en-suite facilities.

The hotel features 182 beautifully appointed guest rooms all include Wi-Fi, hairdryer and tea/coffee making facilities. While staying at Killarney Towers Hotel, guests can relax in their comfortable rooms, and also indulge in the on site bars with nightly entertainment. Guests can also make use of the hotel's leisure centre, which includes a sauna, steam room, whirlpool, swimming pool and gymnasium (small charge). There is a lift in the hotel.

Itinerary

Day 1 Our Door to door service (subject to areas) makes for a relaxed departure, as we head to Pembroke South Wales for the afternoon Ferry to Rosslare, then onto Waterford for a one night stay at the 3 star Dooleys Hotel where you will be in time for the evening meal.

Day 2 After a full Irish breakfast, we leave Waterford and head for Middleton for a guided tour of the Jameson Distillery (inclusive in the tour) and then on to Blarney for a lunch stop. After lunch we continue onto Killarney; this is home for the next 4 nights in the 4 star Killarney Towers which is located in the city centre.

Day 3 Free day at leisure - your driver can organise a cruise on the lakes of Killarney and Jaunting Car Tour (cost not included in tour).

Day 4 A full day excursion touring the famous Ring of Kerry, passing through some of the most picturesque and magnificent scenery in the whole of Ireland. There will also be a stop at the Kerry Bog

Village Museum. We then continue to the Ladies View where you can witness the fabulous views of the lake below.

Day 5 A comfortable journey across the Emerald Isle making a stop in Dungarvan Town, then continuing onto Waterford and Dooleys Hotel where you can have free time in the city of Waterford - home to the Waterford Crystal.

Day 6 Unfortunately we sadly leave the hotel and make our way back to Rosslare for the morning ferry crossing back to Pembroke where we will arrive back home mid-evening.

Please note: For the overnight stays en-route your main luggage may not always be available and you should pack your overnight requirements in a separate bag.

Please also note: Photographic ID is required for this tour (passport, driving licence or bus pass).

Required for this tour:

- Insurance
- Euros Currency

PRICE INCLUDES

- ✓ 4 nights in Killarney Towers - Half Board
- ✓ 2 nights at the Dooleys Hotel - Half Board
- ✓ All coach travel
- ✓ Entrance into the Jameson Distillery



DATES & PRICES

DATES	DAYS	PRICE
26-31 Jul	6 days (Tue-Sun)	£555
Single Supplement £137		

Easter Breaks



DESTINATION	DATE	DAYS	PRICE
Paignton – Cambria Hotel	14-18 Apr	5 days (Thur-Mon)	£305
Bridlington – The Monarch Hotel	15-18 Apr	4 days (Fri-Mon)	£220
Scarborough – The Cumberland Hotel	16-17 Apr	2 days (Sat-Sun)	£102
Paignton – The Hotel Bonair	18-22 Apr	5 days (Mon-Fri)	£278
Torquay – Nethway Hotel	18-22 Apr	5 days (Mon-Fri)	£305
Bournemouth – Royal Bath Hotel	18-22 Apr	5 days (Mon-Fri)	£302

Early Bird Special Theme Breaks

DESTINATION	DATE	DAYS	PRICE
Blackpool – Ruskin Hotel – 60's Week*	10-14 Jan	5 days (Mon-Fri)	£180
Blackpool – Ruskin Hotel – Soul & Motown*	17-21 Jan	5 days (Mon-Fri)	£180
Blackpool – Ruskin Hotel – UK Tour*	24-28 Jan	5 days (Mon-Fri)	£180

* No taxis for Early Bird Breaks in January.

Christmas Breaks

DESTINATION	DATE	PRICE
Llandudno – The Four Oaks Hotel	23-27 Dec	£445
Harrogate – Cairn Hotel	23-27 Dec	£512
Blackpool – Ruskin Hotel	23-27 Dec	£429
St Annes – The Monterey Beach Hotel	23-27 Dec	£418
Weymouth – Carlton Hotel	23-27 Dec	£469
Bournemouth – Suncliff Hotel	23-27 Dec	£567



Twixmas Break

DESTINATION	DATE	PRICE
Weston-Super-Mare – Sandringham Hotel	27-30 Dec	£219



New Year Breaks

DESTINATION	DATE	PRICE
Isle of Wight – The Sands Hotel Sandown	29 Dec-2 Jan	£390
Bournemouth – Suncliff Hotel	30 Dec-2 Jan	£436
Harrogate – Cairn Hotel	30 Dec-2 Jan	£419
Llandudno – The Four Oaks Hotel	30 Dec-2 Jan	£350
Southport – Talbot Hotel	30 Dec-2 Jan	£330
St Annes – The Monterey Beach Hotel	30 Dec-2 Jan	£358
Paignton – Cambria Hotel	30 Dec-3 Jan	£415
Weymouth – The Carlton Hotel	30 Dec-3 Jan	£387



At a glance



DATE	PAGE	DESTINATION	PRICE
JANUARY			
10-14 Jan	11	Torquay – Derwent Hotel	£175.00
10-14 Jan	39	Blackpool – Ruskin Hotel	£180.00
17-21 Jan	39	Blackpool – Ruskin Hotel	£180.00
17-21 Jan	41	Southport – Talbot Hotel	£155.00
24-28 Jan	16	Bournemouth – Suncliff Hotel	£244.00
24-28 Jan	39	Blackpool – Ruskin Hotel	£180.00
31 Jan-4 Feb	11	Torquay – Derwent Hotel	£175.00
31 Jan-4 Feb	23	Weston Super Mare – Sandringham Hotel	£192.00

FEBRUARY			
7-11 Feb	10	Torquay – Nethway Hotel	£270.00
7-11 Feb	33	Mystery Breaks	£221.00
14-18 Feb	14	Weymouth – The Carlton Hotel	£191.00
14-18 Feb	25	Llandudno – Hydro Hotel	£254.00
14-18 Feb	32	Harrogate – Cairn Hotel	£264.00
14-18 Feb	38	Blackpool – Queens Hotel	£212.00
14-18 Feb	41	Southport – Talbot Hotel	£165.00
21-25 Feb	11	Torquay – Derwent Hotel	£234.00
21-25 Feb	24	Tenby – Belgrave Hotel	£313.00
28 Feb-4 Mar	14	Weymouth – The Carlton Hotel	£191.00
28 Feb-4 Mar	10	Torquay – Nethway Hotel	£270.00
28 Feb-4 Mar	16	Bournemouth – Suncliff Hotel	£256.00
28 Feb-4 Mar	25	Llandudno – The Four Oaks Hotel	£240.00
28 Feb-4 Mar	29	Great Yarmouth – New Beach Hotel	£232.00

MARCH			
7-11 Mar	13	Paignton – The Hotel Bonair	£242.00
7-11 Mar	20	Eastbourne – Queens Hotel	£279.00
7-11 Mar	39	St Annes – The Monterey Beach Hotel	£232.00
7-11 Mar	46	Perth 2 Cities & the Kingdom of Fife – Salutation Hotel	£296.00
11-14 Mar	25	Llandudno – The Four Oaks Hotel	£220.00
14-18 Mar	14	Weymouth – The Carlton Hotel	£191.00

DATE	PAGE	DESTINATION	PRICE
14-18 Mar	25	Llandudno – Hydro Hotel	£274.00
14-18 Mar	26	Llandudno – Chatsworth House Hotel	£224.00
14-18 Mar	41	Southport – Talbot Hotel	£185.00
14-18 Mar	48	Aberfoyle – Rob Roy Hotel	£251.00
19-20 Mar	34	Chester Weekend – Queens Hallmark Hotel	£124.00
19-20 Mar	42	Scarborough – The Cumberland Hotel	£95.00
21-25 Mar	11	Torquay – Derwent Hotel	£248.00
21-25 Mar	29	Great Yarmouth – New Beach Hotel	£244.00
21-25 Mar	42	Scarborough – Delmont Hotel	£230.00
24-28 Mar	6	Falmouth – Membly Hall Hotel	£312.00
25-27 Mar	38	Blackpool – Queens Hotel	£140.00
26-27 Mar	22	London – Mothers Day Lunch & River Cruise Weekend – The Tower Hotel	£167.00
28 Mar-1 Apr	10	Torquay – Nethway Hotel	£285.00
28 Mar-1 Apr	16	Bournemouth – Suncliff Hotel	£284.00
28 Mar-1 Apr	19	Eastbourne – Haddon Hall Hotel	£280.00
28 Mar-1 Apr	23	Weston Super Mare – Sandringham Hotel	£226.00
28 Mar-1 Apr	25	Llandudno – The Four Oaks Hotel	£260.00
28 Mar-1 Apr	39	Blackpool – Ruskin Hotel	£265.00
28 Mar-1 Apr	40	Grange Over Sands – Cumbria Grand Hotel	£276.00

APRIL			
3-7 Apr	41	Southport – Talbot Hotel	£215.00
3-7 Apr	49	Inverness – Palace Spa Hotel	£410.00
4-8 Apr	11	Torquay – Derwent Hotel	£279.00
4-8 Apr	26	Llandudno – Chatsworth House Hotel	£258.00
8-11 Apr	25	Llandudno – The Four Oaks Hotel	£220.00
11-15 Apr	16	Bournemouth – Suncliff Hotel	£302.00
11-15 Apr	20	Eastbourne – The Cumberland Hotel	£305.00
11-15 Apr	24	Tenby – Belgrave Hotel	£328.00
14-18 Apr	13	Paignton – Cambria Hotel	£305.00
15-18 Apr	42	Bridlington – The Monarch Hotel	£220.00
15-19 Apr	14	Weymouth – The Carlton Hotel	£248.00



DATE	PAGE	DESTINATION	PRICE
16-17 Apr	42	Scarborough – The Cumberland Hotel	£102.00
18-22 Apr	9	Babbacombe – Anchorage Hotel	£262.00
18-22 Apr	10	Torquay – Nethway Hotel	£305.00
18-22 Apr	13	Paignton – The Hotel Bonair	£278.00
18-22 Apr	15	Bournemouth – Royal Bath Hotel	£302.00
18-22 Apr	39	St Annes – The Monterey Beach Hotel	£240.00
20-24 Apr	14	Weymouth – The Carlton Hotel	£248.00
25-29 Apr	10	Torquay – Metropole Hotel	£289.00
25-29 Apr	26	Llandudno – Chatsworth House Hotel	£268.00
25-29 Apr	12	Isle of Wight – The Sands Hotel Sandown	£286.00
25-29 Apr	25	Llandudno – The Four Oaks Hotel	£260.00
25-29 Apr	26	Barmouth – Min-y-Mor Hotel	£399.00
25-29 Apr	29	Cromer – Hotel De Paris	£303.00
25-29 Apr	42	Scarborough – The Cumberland Hotel	£280.00
29 Apr-2 May	32	Whitby – Royal Hotel	£240.00
30 Apr-4 May	42	Bridlington – The Monarch Hotel	£280.00

MAY

2-6 May	13	Paignton – The Hotel Bonair	£278.00
2-6 May	25	Llandudno – The Four Oaks Hotel	£278.00
2-6 May	27	Llanberis Welsh Rail & Sail – Royal Victoria Hotel	£468.00
2-6 May	39	Blackpool – Ruskin Hotel	£301.00
2-6 May	41	Southport – Talbot Hotel	£215.00
2-7 May	14	Weymouth – The Carlton Hotel	£310.00
7-8 May	35	Harry Potter Studios – Crowne Plaza London – Heathrow, West Drayton	£184.00
9-13 May	20	Eastbourne – Queens Hotel	£343.00
9-13 May	20	Eastbourne – The Cumberland Hotel	£309.00
9-13 May	25	Llandudno – Hydro Hotel	£326.00
9-13 May	33	Skegness – Savoy Hotel	£325.00
14-18 May	42	Bridlington – The Monarch Hotel	£308.00
16-20 May	10	Torquay – Metropole Hotel	£317.00
16-20 May	15	Bournemouth – Ocean Beach & Spa Hotel	£334.00
16-20 May	48	Aberfoyle – Rob Roy Hotel	£279.00
16-20 May	28	Little Boats & Trains of Norfolk – Holiday Inn, Norwich	£402.00
16-20 May	39	St Annes – The Monterey Beach Hotel	£252.00
16-20 May	42	Scarborough – The Cumberland Hotel	£308.00

DATE	PAGE	DESTINATION	PRICE
20-22 May	35	Harrogate Weekends – Cairn Hotel	£179.00
20-23 May	32	Whitby – Royal Hotel	£255.00
21-28 May	13	Paignton – The Hotel Bonair	£420.00
22-28 May	7	Newquay & The Eden Project – Pentire Hotel	£590.00
23-27 May	17	Brighton – Royal Albion Hotel	£306.00
23-27 May	11	Torquay – Derwent Hotel	£300.00
23-27 May	18	Ironbridge & Severn Valley	£412.00
23-27 May	26	Llandudno – Chatsworth House Hotel	£278.00
23-27 May	21	Cotswolds Tour – Bosworth Hall Hotel & Spa	£277.00
23-28 May	19	Eastbourne – Haddon Hall Hotel	£370.00
23-28 May	24	Tenby – Belgrave Hotel	£384.00
25-29 May	19	Bognor Regis – Royal Norfolk Hotel	£327.00
25-29 May	29	Great Yarmouth – New Beach Hotel	£295.00
28 May-4 Jun	14	Weymouth – The Carlton Hotel	£403.00
28 May-4 Jun	25	Llandudno – The Four Oaks Hotel	£414.00
29 May-2 Jun	8	Sidmouth – Royal York & Faulkner Hotel	£418.00
30 May-3 Jun	16	Bournemouth – Suncliff Hotel	£322.00
30 May-3 Jun	42	Scarborough – Delmont Hotel	£269.00

JUNE

4-8 Jun	10	Torquay – Metropole Hotel	£341.00
4-11 Jun	13	Paignton – Cambria Hotel	£435.00
4-11 Jun	20	Eastbourne – The Cumberland Hotel	£459.00
6-10 Jun	9	Exmouth – Ashton Court Hotel	£301.00
6-10 Jun	9	West Country Rail & Sail – Tiverton Hotel	£458.00
6-10 Jun	38	Blackpool – Park House Hotel	£365.00
8-12 Jun	24	Porthcawl – Seabank Hotel	£366.00
11-15 Jun	8	Ilfracombe – Imperial Hotel	£311.00
11-15 Jun	38	Blackpool – Queens Hotel	£278.00
11-15 Jun	44	Waterways of Scotland – Leapark Hotel, Grangemouth	£398.00
12-17 Jun	26	Llandudno – Chatsworth House Hotel	£345.00
12-17 Jun	41	Southport – Talbot Hotel	£240.00
13-17 Jun	26	Barmouth – Min-y-Mor Hotel	£399.00
18-25 Jun	12	Isle of Wight – Shanklin Hotel, Shanklin	£511.00
18-25 Jun	13	Paignton – Cambria Hotel	£435.00
18-25 Jun	14	Weymouth – The Carlton Hotel	£413.00
19-26 Jun	11	Torquay – Derwent Hotel	£470.00



DATE	PAGE	DESTINATION	PRICE
20-24 Jun	15	Bournemouth – Royal Bath Hotel	£368.00
20-24 Jun	25	Llandudno – The Four Oaks Hotel	£386.00
20-24 Jun	39	Blackpool – Ruskin Hotel	£301.00
20-24 Jun	39	St Annes – The Monterey Beach Hotel	£260.00
20-24 Jun	40	Morecambe – Auckland Hotel	£316.00
20-24 Jun	37	Pontins, Sand Bay – Adults Only	£235.00
20-25 Jun	10	Torquay – Nethway Hotel	£420.00
24-28 Jun	43	Isle of Man – Chesterhouse Hotel	£482.00
25 Jun-2 Jul	13	Paignton – The Hotel Bonair	£430.00
25 Jun-2 Jul	33	Skegness – Savoy Hotel	£421.00
26 Jun-2 Jul	24	Tenby – Belgrave Hotel	£435.00
27 Jun-1 Jul	16	Bournemouth – Suncliff Hotel	£338.00
27 Jun-1 Jul	47	Dunoon – Argyll Hotel, Dunoon	£346.00

JULY

2-9 Jul	14	Weymouth – The Carlton Hotel	£423.00
2-9 Jul	12	Isle of Wight – The Sands Hotel Sandown	£458.00
3-9 Jul	12	Torquay – Regina Hotel	£483.00
4-8 Jul	42	Scarborough – Delmont Hotel	£275.00
4-9 Jul	10	Torquay – Nethway Hotel	£420.00
9-13 Jul	12	Isle of Wight – Shanklin Hotel, Shanklin	£364.00
9-16 Jul	13	Paignton – The Hotel Bonair	£430.00
9-16 Jul	26	Llandudno – Chatsworth House Hotel	£452.00
10-15 Jul	41	Southport – Talbot Hotel	£240.00
11-15 Jul	21	Cotswolds Tour Bosworth – Hall Hotel & Spa	£277.00
11-15 Jul	29	Great Yarmouth – New Beach Hotel	£351.00
11-15 Jul	39	Blackpool – Ruskin Hotel	£322.00
11-15 Jul	41	Liverpool – Adelphi Hotel	£303.00
11-15 Jul	48	Aberfoyle – Rob Roy Hotel	£291.00
16-23 Jul	14	Weymouth – The Carlton Hotel	£423.00
16-23 Jul	20	Eastbourne – The Cumberland Hotel	£466.00
18-22 Jul	9	Babbacombe – Anchorage Hotel	£298.00
18-22 Jul	20	Eastbourne – Queens Hotel	£375.00
18-22 Jul	22	Folkestone – Grand Burstin Hotel	£262.00
18-22 Jul	38	Blackpool – Park House Hotel	£365.00
18-22 Jul	45	Great Highlands Railway – Highlander Hotel, Newtonmore	£502.00
24-29 Jul	11	Torquay – Derwent Hotel	£375.00

DATE	PAGE	DESTINATION	PRICE
25-29 Jul	9	Exmouth – Ashton Court Hotel	£301.00
25-29 Jul	17	Brighton – Royal Albion Hotel	£330.00
25-29 Jul	37	Pontins, Sand Bay – Adults Only	£247.00
24-29 Jul	23	Weston Super Mare – Sandringham Hotel	£320.00
24-30 Jul	26	Llandudno – Chatsworth House Hotel	£406.00
25-29 Jul	39	St Annes – The Monterey Beach Hotel	£264.00
26-31 Jul	51	Summertime in Ireland, Killarney – Killarney Towers Hotel	£555.00
29 Jul-1 Aug	32	Whitby – Royal Hotel	£276.00
30 Jul-6 Aug	12	Isle of Wight – The Sands Hotel Sandown	£458.00
30 Jul-6 Aug	13	Paignton – The Hotel Bonair	£430.00
30 Jul-6 Aug	13	Paignton – Cambria Hotel	£435.00

AUGUST

1-5 Aug	31	Northumbria Coast & Country – Windsor Hotel, Whitley Bay	£464.00
1-5 Aug	37	Pontins, Pakefield	£235.00
6-13 Aug	14	Weymouth – The Carlton Hotel	£423.00
7-12 Aug	26	Llandudno – Chatsworth House Hotel	£365.00
7-12 Aug	41	Southport – Talbot Hotel	£240.00
8-12 Aug	15	Bournemouth – Royal Bath Hotel	£338.00
10-14 Aug	8	Ilfracombe – Imperial Hotel	£323.00
11-15 Aug	30	Norfolk – Norwich Royal Retreat – Mercure Norwich	£408.00
12-13 Aug	36	Legoland Weekend – Holiday Inn – Heathrow (M4 J4)	£183.00
12-13 Aug	35	Harry Potter Studios – Crowne Plaza London – Heathrow, West Drayton	£TBC
13-14 Aug	36	London Weekend – The Tower Hotel	£149.00
13-19 Aug	12	Isle of Wight – The Sands Hotel Sandown	£426.00
15-19 Aug	9	Exmouth – Ashton Court Hotel	£301.00
13-20 Aug	14	Weymouth – The Carlton Hotel	£423.00
15-20 Aug	50	Carrickfergus, Belfast – Loughshore Hotel	£599.00
20-27 Aug	13	Paignton – Cambria Hotel	£435.00
20-27 Aug	25	Llandudno – The Four Oaks Hotel	£435.00
21-26 Aug	20	Eastbourne – The Cumberland Hotel	£370.00
21-27 Aug	26	Llandudno – Chatsworth House Hotel	£454.00
22-26 Aug	37	Pontins, Pakefield	£235.00
24-26 Aug	34	Edinburgh Tattoo – King Robert Hotel, Stirling	£311.00



DATE	PAGE	DESTINATION	PRICE
24-28 Aug	38	Blackpool – Queens Hotel	£308.00
26-29 Aug	32	Whitby – Royal Hotel	£285.00
27 Aug-2 Sept	14	Weymouth – The Carlton Hotel	£336.00
27 Aug-3 Sept	13	Paignton – The Hotel Bonair	£420.00
28 Aug-2 Sept	23	Weston Super Mare – Sandringham Hotel	£325.00
29 Aug-2 Sept	26	Barmouth – Min-y-Mor Hotel	£399.00
29 Aug-2 Sept	39	Blackpool – Ruskin Hotel	£322.00
29 Aug-2 Sept	42	Scarborough – Delmont Hotel	£284.00
29 Aug-3 Sept	24	Tenby – Belgrave Hotel	£392.00
31 Aug-4 Sept	42	Scarborough – The Cumberland Hotel	£312.00

SEPTEMBER

3-10 Sept	13	Paignton – Cambria Hotel	£435.00
4-9 Sept	11	Torquay – Derwent Hotel	£375.00
4-9 Sept	41	Southport – Talbot Hotel	£230.00
5-9 Sept	23	Mold – Beaufort Park Hotel	£372.00
5-9 Sept	25	Llandudno – The Four Oaks Hotel	£300.00
5-9 Sept	33	Skegness – Savoy Hotel	£340.00
5-9 Sept	38	Blackpool – Park House Hotel	£335.00
5-9 Sept	48	Arrochar Under Loch and Quay – Arrochar Hotel	£482.00
7-11 Sept	25	Llandudno – Hydro Hotel	£314.00
10-14 Sept	44	Waterways of Scotland – Leapark Hotel, Grangemouth	£406.00
12-16 Sept	9	Exmouth – Ashton Court Hotel	£301.00
12-16 Sept	14	Weymouth – The Carlton Hotel	£264.00
12-16 Sept	17	Brighton – Royal Albion Hotel	£322.00
12-16 Sept	48	Aberfoyle – Rob Roy Hotel	£283.00
16-19 Sept	38	Blackpool – Queens Hotel	£262.00
17-21 Sept	8	Ilfracombe – Imperial Hotel	£287.00
17-21 Sept	20	Eastbourne – Queens Hotel	£331.00
18-23 Sept	10	Torquay – Nethway Hotel	£420.00
18-23 Sept	20	Eastbourne – The Cumberland Hotel	£357.00
18-23 Sept	26	Llandudno – Chatsworth House Hotel	£360.00
18-24 Sept	6	Falmouth – Membly Hall Hotel	£509.00
18-24 Sept	12	Isle of Wight – Shanklin Hotel, Shanklin	£422.00
19-23 Sept	22	Folkestone – Grand Burstin Hotel	£250.00
19-23 Sept	21	Cotswolds Tour – Bosworth Hall Hotel & Spa	£277.00
19-23 Sept	39	St Annes – The Monterey Beach Hotel	£272.00

DATE	PAGE	DESTINATION	PRICE
19-23 Sept	37	Pontins, Sand Bay – Adults Only	£223.00
24-30 Sept	12	Isle of Wight – The Sands Hotel Sandown	£396.00
25-30 Sept	29	Great Yarmouth – New Beach Hotel	£300.00
26-30 Sept	9	Babbacombe – Anchorage Hotel	£274.00
26-30 Sept	13	Paignton – The Hotel Bonair	£260.00
26-30 Sept	14	Weymouth – The Carlton Hotel	£255.00
26-30 Sept	16	Bournemouth – Suncliff Hotel	£338.00
26-30 Sept	47	Dunoon – Argyll Hotel, Dunoon	£346.00
26-30 Sept	24	Porthcawl – Seabank Hotel	£294.00
26-30 Sept	11	Torquay – Derwent Hotel	£306.00
28 Sept-2 Oct	8	Sidmouth – Royal York & Faulkner Hotel	£425.00

OCTOBER

3-7 Oct	13	Paignton – Cambria Hotel	£310.00
3-7 Oct	15	Bournemouth – Royal Bath Hotel	£302.00
3-7 Oct	19	Eastbourne – Haddon Hall Hotel	£312.00
3-7 Oct	23	Weston Super Mare – Sandringham Hotel	£266.00
3-7 Oct	26	Llandudno – Chatsworth House Hotel	£293.00
3-7 Oct	26	Barmouth – Min-y-Mor Hotel	£399.00
3-7 Oct	38	Blackpool – Queens Hotel	£340.00
3-7 Oct	41	Southport – Talbot Hotel	£210.00
10-14 Oct	20	Eastbourne – The Cumberland Hotel	£302.00
10-14 Oct	21	Cotswolds Tour – Bosworth Hall Hotel & Spa	£277.00
10-14 Oct	25	Llandudno – The Four Oaks Hotel	£260.00
10-14 Oct	25	Llandudno – Hydro Hotel	£286.00
10-14 Oct	39	St Annes – The Monterey Beach Hotel	£252.00
17-21 Oct	14	Weymouth – The Carlton Hotel	£255.00
10-14 Oct	8	Bideford – Durrant House Hotel	£277.00
13-17 Oct	40	Grange Over Sands – Cumbria Grand Hotel	£380.00
17-21 Oct	7	Newquay – Eliot Hotel	£276.00
17-21 Oct	16	Bournemouth – Suncliff Hotel	£306.00
17-21 Oct	48	Aberfoyle – Rob Roy Hotel	£267.00
21-23 Oct	32	Harrogate – Cairn Hotel	£163.00
21-24 Oct	25	Llandudno – The Four Oaks Hotel	£220.00
21-24 Oct	32	Whitby – Royal Hotel	£225.00
24-28 Oct	17	Brighton – Royal Albion Hotel	£322.00
24-28 Oct	10	Torquay – Nethway Hotel	£320.00



DATE	PAGE	DESTINATION	PRICE
24-28 Oct	19	Bognor Regis – Royal Norfolk Hotel	£295.00
24-28 Oct	24	Tenby – Belgrave Hotel	£340.00
24-28 Oct	29	Great Yarmouth – New Beach Hotel	£267.00
24-28 Oct	29	Cromer – Hotel De Paris	£287.00
24-28 Oct	42	Scarborough – The Cumberland Hotel	£272.00
28-31 Oct	38	Blackpool – Park House Hotel	£280.00
28-31 Oct	42	Bridlington – The Monarch Hotel	£224.00
31 Oct-4 Nov	12	Isle of Wight – The Sands Hotel Sandown	£282.00
31 Oct-4 Nov	17	Southsea – The Royal Beach Hotel	£359.00
31 Oct-4 Nov	23	Weston Super Mare – Sandringham Hotel	£272.00
31 Oct-4 Nov	39	Blackpool – Ruskin Hotel	£288.00

NOVEMBER

4-7 Nov	32	Whitby – Royal Hotel	£201.00
5-6 Nov	36	London Weekend – The Tower Hotel	£155.00
6-10 Nov	49	Inverness – Palace Spa Hotel	£410.00
7-11 Nov	11	Torquay – Derwent Hotel	£298.00
7-11 Nov	13	Paignton – Cambria Hotel	£345.00
7-11 Nov	15	Bournemouth – Ocean Beach & Spa Hotel	£314.00
7-11 Nov	33	Skegness – Savoy Hotel	£310.00
7-11 Nov	38	Blackpool – Queens Hotel	£269.00
7-11 Nov	42	Scarborough – Delmont Hotel	£252.00
11-13 Nov	42	Bridlington – The Monarch Hotel	£172.00
11-14 Nov	25	Llandudno – The Four Oaks Hotel	£240.00
11-14 Nov	29	Cromer – Hotel De Paris	£274.00
14-18 Nov	13	Paignton – The Hotel Bonair	£280.00
14-18 Nov	14	Weymouth – The Carlton Hotel	£264.00
14-18 Nov	20	Eastbourne – The Cumberland Hotel	£306.00
14-18 Nov	26	Llandudno – Chatsworth House Hotel	£281.00
14-18 Nov	33	Mystery Breaks	£264.00
14-18 Nov	39	St Annes – The Monterey Beach Hotel	£250.00
18-20 Nov	35	Winchester Christmas Market – Hampshire Court Hotel, Basingstoke	£209.00
19-20 Nov	34	Chester Weekend – Queens Hallmark Hotel	£132.00
19-20 Nov	34	Liverpool Weekends	£115.00
21-25 Nov	16	Bournemouth – Suncliff Hotel	£310.00
21-25 Nov	24	Tenby – Belgrave Hotel	£340.00
21-25 Nov	29	Great Yarmouth – New Beach Hotel	£304.00

DATE	PAGE	DESTINATION	PRICE
21-25 Nov	39	Blackpool – Ruskin Hotel	£288.00
21-25 Nov	41	Southport – Talbot Hotel	£220.00
24-26 Nov	35	Thursford Christmas Spectacular – The Brook Hotel	£264.00
28 Nov-2 Dec	12	Isle of Wight – The Sands Hotel Sandown	£274.00
28 Nov-2 Dec	25	Llandudno – The Four Oaks Hotel	£284.00

DECEMBER

5-9 Dec	14	Weymouth – The Carlton Hotel	£264.00
5-9 Dec	19	Eastbourne – Haddon Hall Hotel	£338.00
5-9 Dec	24	Tenby – Belgrave Hotel	£305.00
5-9 Dec	23	Weston Super Mare – Sandringham Hotel	£260.00
5-9 Dec	26	Llandudno – Chatsworth House Hotel	£251.00
5-9 Dec	40	Morecambe – Auckland Hotel	£310.00
5-9 Dec	42	Scarborough – The Cumberland Hotel	£279.00
9-11 Dec	34	Longleat Festival of Light – DoubleTree by Hilton Hotel, Swindon	£242.00
9-12 Dec	39	Blackpool – Ruskin Hotel	£244.00
12-16 Dec	16	Bournemouth – Suncliff Hotel	£278.00
12-16 Dec	10	Torquay – Nethway Hotel	£315.00
12-16 Dec	42	Bridlington – The Monarch Hotel	£269.00
12-16 Dec	46	Perth 2 Cities & the Kingdom of Fife – Salutation Hotel	£274.00
16-19 Dec	25	Llandudno – The Four Oaks Hotel	£220.00
23-27 Dec	14	Weymouth – The Carlton Hotel	£469.00
23-27 Dec	16	Bournemouth – Suncliff Hotel	£567.00
23-27 Dec	25	Llandudno – The Four Oaks Hotel	£445.00
23-27 Dec	32	Harrogate – Cairn Hotel	£512.00
23-27 Dec	39	Blackpool – Ruskin Hotel	£429.00
23-27 Dec	39	St Annes – The Monterey Beach Hotel	£418.00
27-30 Dec	23	Weston Super Mare – Sandringham Hotel	£219.00
29 Dec-2 Jan	12	Isle of Wight – The Sands Hotel Sandown	£390.00
30 Dec-2 Jan	16	Bournemouth – Suncliff Hotel	£436.00
30 Dec-2 Jan	25	Llandudno – The Four Oaks Hotel	£350.00
30 Dec-2 Jan	32	Harrogate – Cairn Hotel	£419.00
30 Dec-2 Jan	39	St Annes – The Monterey Beach Hotel	£358.00
30 Dec-2 Jan	41	Southport – Talbot Hotel	£330.00
30 Dec-3 Jan	13	Paignton – Cambria Hotel	£415.00
30 Dec-3 Jan	14	Weymouth – The Carlton Hotel	£387.00



Fair Trading Agreement

Why should I read this?

Because it is important. The Fair Trading Charter together with the Important Holiday Information form the basis of a legally binding contract between you (the person making the booking and everyone else named) and us (GEE VEE TRAVEL 36-38 Eldon Street, Barnsley, South Yorkshire, S20 2JB). If you take a few moments to study them you will see that they set out, in simple terms, what responsibilities we each have under the contract. Reading it now may help you avoid problems later. Our Fair Trading Agreement and holiday information set out clearly and simply the responsibilities which we at GEE VEE TRAVEL have to you and which you in turn have to us when a contract is made between us.

How do I make a contract?

You can make a contract in a number of ways, by writing to us or by phoning us. The contract between us is made when your booking is entered on our computer and a booking reference number is produced. At that moment, the contract between us begins. We will send you a confirmation after booking - please check it carefully to ensure all the details are correct.

Financial security

GEE VEE TRAVEL is a household name in South Yorkshire, a name that is associated with reliability and security. Our ownership provides you with peace of mind to know that your money is safe and secure. We have appointed PPT Trustees Ltd to act as Trustees to the GEE VEE TRAVEL TRUST ACCOUNT.

Your contract with GEE VEE TRAVEL

1. You pay a deposit

If you choose to take out the travel insurance we offer, the premium must be paid at the time of booking, along with a deposit of £30 per person. You will be provided with a copy of the policy wording along with your confirmation of booking. Please note that a specimen copy of the policy wording is available upon request.

2. You pay the balance

The balance of the fare must be paid via the office at which you made your booking at least 6 weeks before the holiday departure date. If you book within 6 weeks of the departure date you must pay the full holiday cost at the time of booking. If the balance is not paid in time we reserve the right to cancel your holiday, retain your deposit, and apply cancellation charges, all tour fares are payable in sterling currency.

3. If you change your booking

If you want to make any changes to your booking such as changing the date or room type or joining point, we will do our best to help but we cannot guarantee to make the changes that you want. If we do manage to make the changes we will normally charge £10 per booking to cover our administration costs - plus any charges if you are buying a more expensive holiday. Some changes however are so significant that we will treat them as cancellations. Significant changes include; transfer to a different holiday or departure date within the balance due date. If it is impossible to go on holiday then, in some circumstances, you may transfer your booking to someone else (a transferee) if you give us reasonable notice.

The transferee must be someone who satisfies all the conditions for the holiday. We will then make an administration charge of £10 per person for every transfer we make. We will also charge you for any extra costs caused by the transfer. Both you and the transferee remain responsible for paying for the holiday. If you do not transfer your booking to someone else, that person must take out separate insurance if insurance is required.

4. If you cancel your holiday

You, or any members of your party, may cancel your holiday at any time provided that the cancellation is made by the person who booked and is communicated to us in writing or person via the office at which you made your booking. As this incurs administration costs we will retain your deposit and, in addition, may apply cancellation charges.

5. If you have a complaint

If you have a complaint during your holiday, please inform our driver or representative who will do his/her utmost to resolve the problem immediately. If the matter cannot be put right on the spot you must notify us in writing after the tour ends. Please address your letter to: GEE VEE TRAVEL, 37 St Marys Gate, Chesterfield, Derbyshire, S41 7TH, and give the tour title and departure date. Failure to establish your complaint immediately in accordance with the above procedure may effect the outcome of it.

6. Statutory Authorities

This brochure is issued subject to applicable Acts of Parliament and Government Regulations and the company reserve the right to modify itineraries to conform with requests from the competent authorities in the United Kingdom and any other sovereign state through which the tours run.

7. Conditions of Carriage

When travelling on GEE VEE TRAVEL coach you are carried under the GEE VEE TRAVEL Conditions of Carriage. When travelling on a ferry or transport provided by any other Courier, the Conditions of Carriage of that Courier apply and are subject to any applicable National Conditions or International Conventions which may limit or exclude liability. The Public Service Vehicle (Conduct of Drivers, Conductors and Passengers) regulations as amended 1990, apply to all coaches throughout any holiday in the UK.



Barnsley Office

36-38 Eldon Street
Barnsley, S70 2JB
Tel: 01226 287 403

Mon - Fri - 9:30am - 4:30pm
Sat - 9:30am - 1:30pm

Chesterfield Office

37 St Mary's Gate
Chesterfield S41 7TH
Tel: 01246 555 002

Mon, Tues, Thurs, Fri - 9:30am - 5pm
Wed & Sat - 9:30am - 2pm

Sheffield Office

23 Holme Lane, Hillsborough
Sheffield S6 4JP
Tel: 0114 232 3366

Mon, Tues, Thurs, Fri - 9:30am - 4pm
Wed & Sat - 9:30am - 1pm

Please note: All offices close Sundays and Bank Holidays



All major Debit/credit cards accepted
(Excluding American Express and business cards)



www.geeveetravel.co.uk

Follow us on facebook

All our holidays are Fully Bonded
and operate a No Smoking Policy

